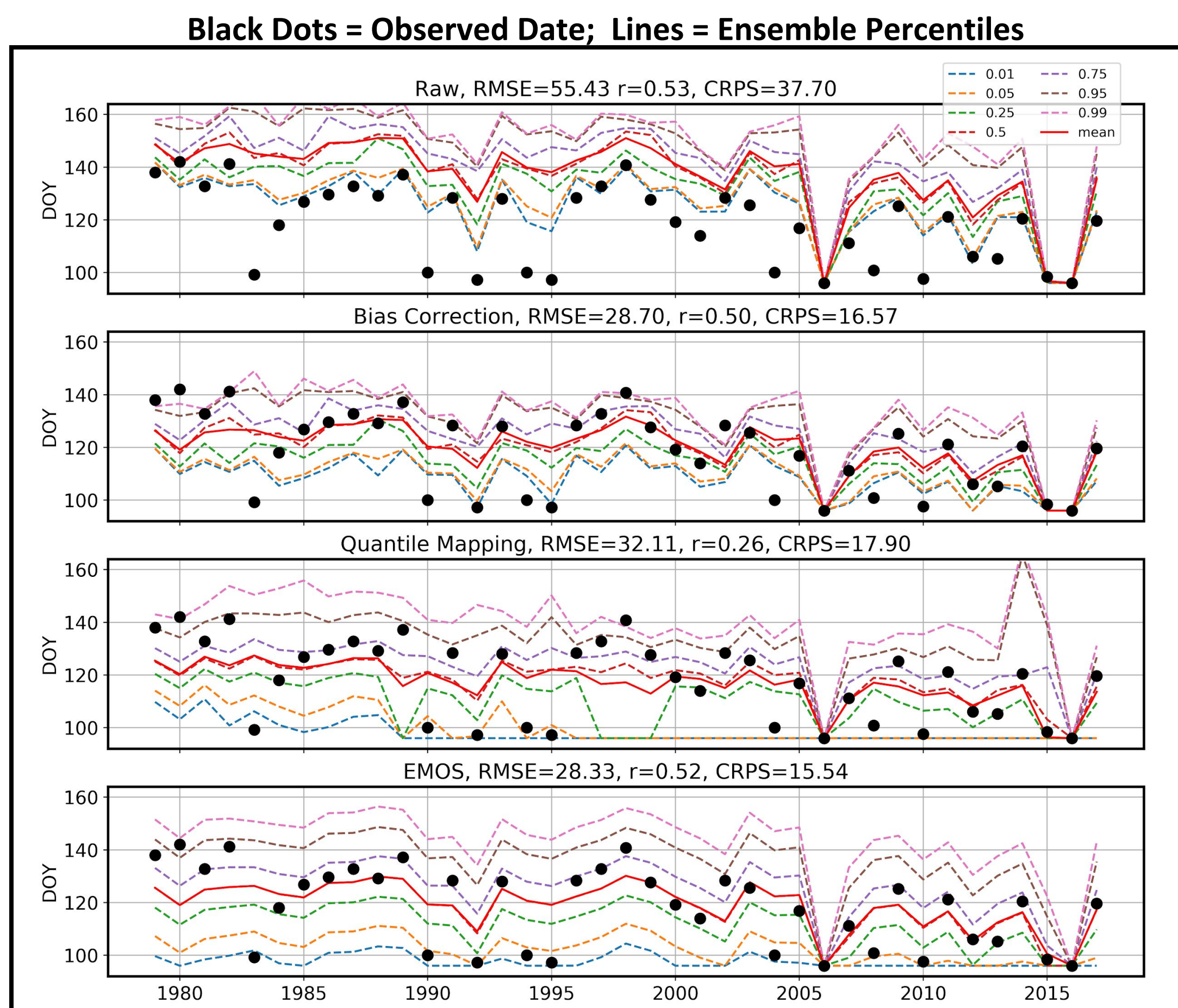


Past Forecasts Can Unlock Model Skill



Sea ice retreating off Newfoundland and Labrador, June 2012



Post-processed sea ice retreat date forecasts: Barents Sea, April 1st (DOY 90) initialization.

Often we think of using observations to initialize, parameterize, and validate dynamical models.

But they can also be used, together with past forecasts, to unlock the intrinsic skill in existing systems.

Utilizing observations to improve forecast skill can be done through statistical post-processing, which forecasters have relied on for decades. In fact, it will always be needed!

But... post-processing seasonal sea ice forecasts, whether its coverage, thickness, or retreat/advance dates, turns out to be a unique and challenging problem.

Let's chat about it!

Arlan Dirkson

University of
Quebec at
Montreal

&

Environment and
Climate Change
Canada



UQÀM



Environment and
Climate Change Canada
Environnement et
Changement climatique Canada



FRAMS