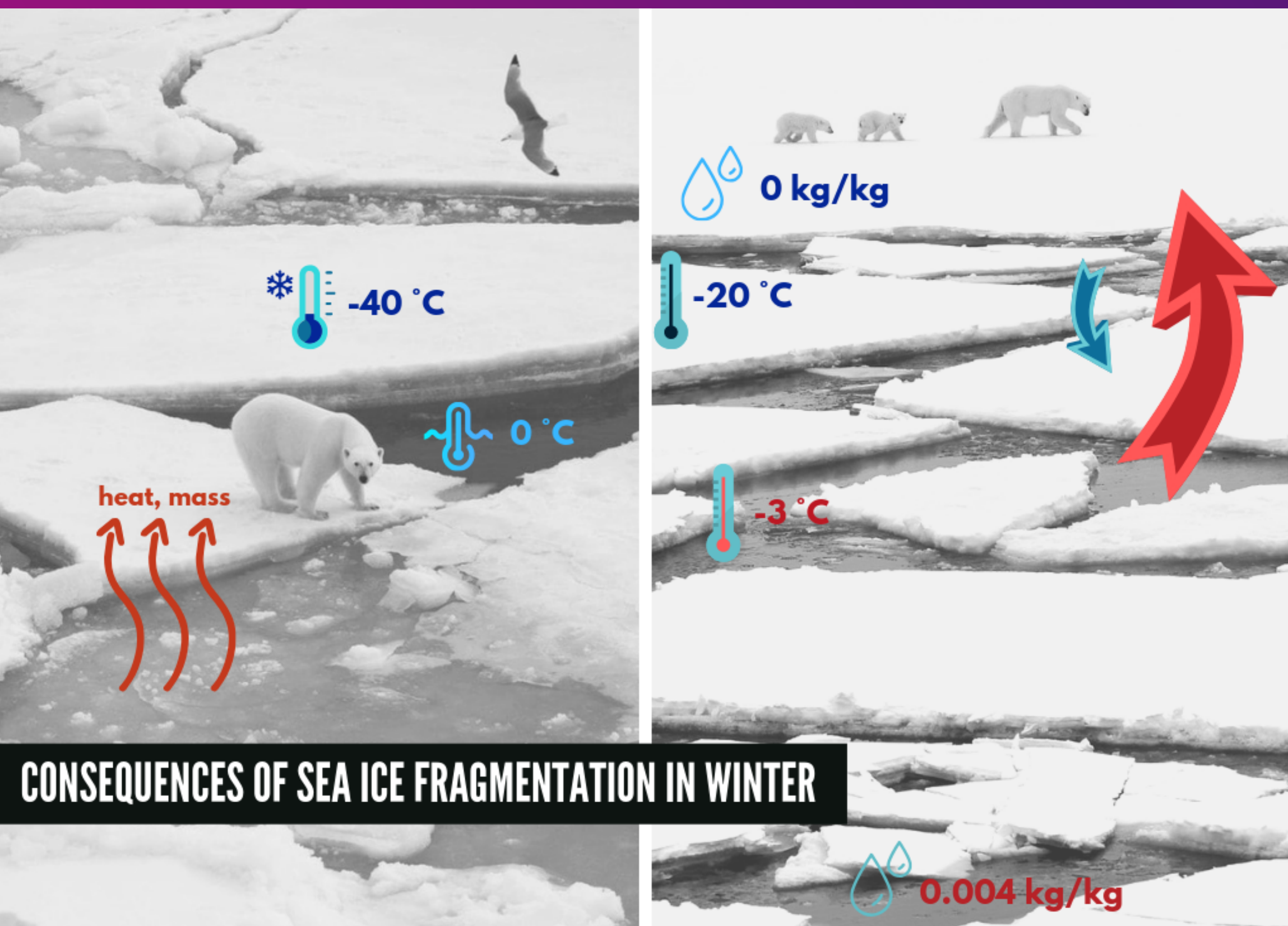


# Complicated relationship of sea ice and atmosphere.

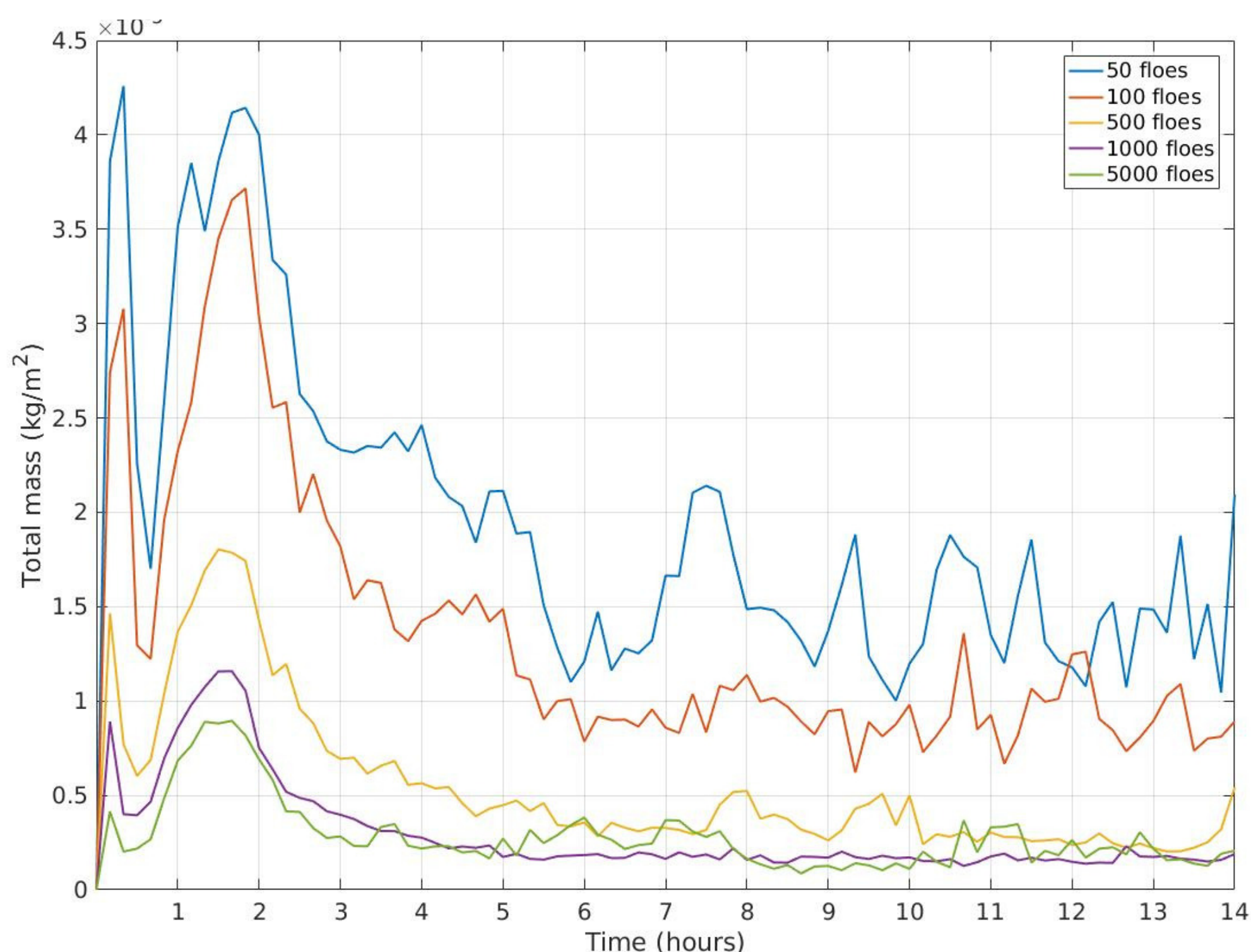


Sea ice fragmentation in winter results in highest temperature difference found on earth!

**A SIGNIFICANT EXCHANGE OF MOISTURE AND HEAT OCCURS!**

However even today we do not fully understand all of the processes that take place.

**I want to know whether floe size distribution also plays a role here!**



**Marta Wenta**



**INSTITUTE OF OCEANOGRAPHY**

**DEPARTMENT OF PHYSICAL OCEANOGRAPHY**

**UNIVERSITY OF GDANSK**