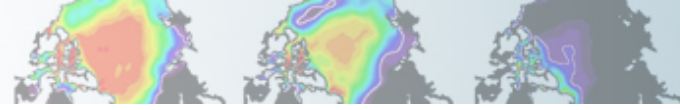


Day 5 Logistics

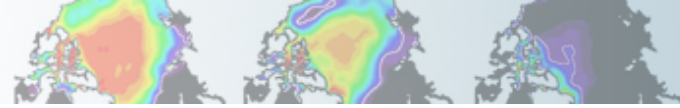
Breakout Sessions

- Lectures 11am-12pm:
 - Ocean / Sea Ice / Land Ice: Director's Conf. Room
 - Land / BGC: Chapman Room
 - Atmosphere / Chem / WACCM: Main Seminar Room
- Lunch from 12-1pm
- Labs 1-3pm:
 - Ocean / Sea Ice / Land Ice: Damon Room
 - Land / BGC: Damon Room
 - Atmosphere / Chem / WACCM: Library



Day 5 Logistics

- Most talks and lab exercises are on tutorial website.
- Alternative: <ftp://ftp.cgd.ucar.edu/archive/tutorial>
- Yubikey returns
- Buses leave at 3:30

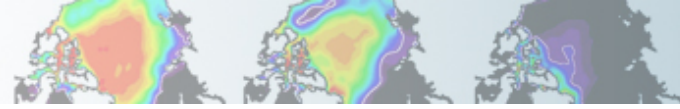


After the Tutorial

- All questions should be posted to the CESM Bulletin Board
<http://bb.cgd.ucar.edu>
- Tutorial Survey
- Code modifications: Tutorial code base on yellowstone/caldera:
`/glade/p/cesm/tutorial/cesm_1_2_2.tutorial`

If you want to use this code base outside of the tutorial: Change the project number from UESM0004 (to your own project #) and remove “-U CESM_WS” from the bsub command in the \$casename.run file. You may also want to change the queue type from “small”.

- CISL-yellowstone allocations:
<https://www2.cisl.ucar.edu/user-support/allocations>

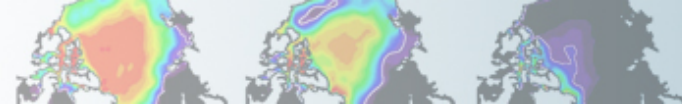


The CESM Community

One goal of the tutorial is for students to come and learn the model, and to return to their home institution and teach others. Students are invited to become active members in the working groups. Sign up for the cesm-participants and working group email lists. Post and answer questions on the CESM Bulletin Board. Join us for the working group meetings and come to the semi-annual meetings in Boulder (~Feb 2017) and Breckenridge (June 2017) to make connections and start new collaborations. Participate in the community!

<http://mailman.cgd.ucar.edu/mailman/listinfo/ccsm-participants>

<http://www2.cesm.ucar.edu/working-groups>



earth • modeling • climate

Search

Working Groups

Home » Working Groups

AMWG | ATMOSPHERE MODEL WORKING GROUP

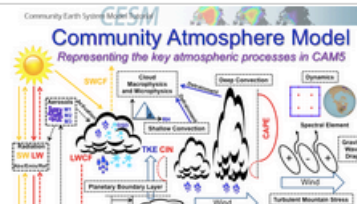
Welcome to the AMWG webpage.

The Atmosphere Model Working Group (AMWG) is a broad collection of researchers across university and federal institutions engaged in atmospheric science research using the [Community Earth System Model](#) (CESM). The overarching goal is to continually develop the [Community Atmosphere Model](#) (CAM) in order to periodically provide new versions for use by the wider CESM community.

The AMWG sets short and long term [development](#) targets to guide community research. Development focuses on research into new and existing physical parameterizations, dynamical cores and added functionality for CAM. To this end close interactions exist with the [Chemistry–Climate Working Group](#) (Chem–ClimWG) and the [Whole Atmosphere Working Group](#) (WAWG). Ultimately, we aim to deliver the best representation of the atmosphere to be used in multiple applications for climate, climate variability and climate change research.

COMMUNITY ATMOSPHERE MODEL (CAM)

The Community Atmosphere Model (CAM) is the latest in a series of global atmosphere models developed at NCAR for the weather and climate research communities. CAM serves as the atmospheric component of the [Community Earth System Model](#) (CESM).



AMWG INFORMATION

[AMWG Priorities](#)

[AMWG Metrics and Diagnostics](#)

[Developers' Guidelines](#)

[Upcoming Meetings](#)

[Past Meetings](#)

[Research Highlights](#)

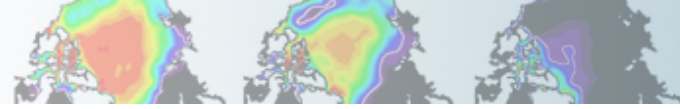
[AMWG Diagnostics Package](#)

AMWG COMMUNICATION

[Email: AMWG Members](#)

[Subscribe to CESM AMWG List](#)

[Subscribe to AMWG Diagnostics Package List](#)



Thanks!

- Funding: NSF and DOE
- Computing: CISL support and CGD IS Group
- Audio/Video Support: Paul Martinez
- Logistics: Barbara Ballard
- Speakers and Developers
- Students: You (for taking this course!)

