

The Importance of Ventilation to Ocean Biogeochemical Modeling

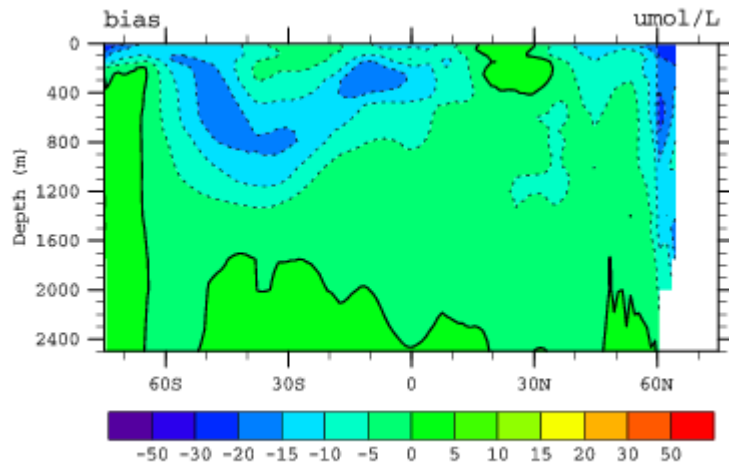
Keith Lindsay (NCAR)

Outline of Presentation

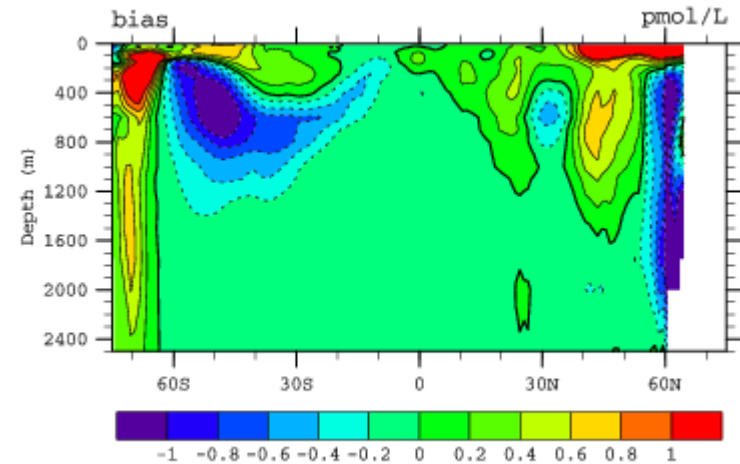
- Anthropogenic CO₂ uptake in CCSM3.1
 - Southern Ocean Focus
 - Some Previous Sensitivity Experiments
 - Potential Paths Forward
- Oxygen Minimum Zones
 - Potential Paths Forward

Zonal Mean CO₂ & CFC-11 Uptake in Coupled CCSM3.1, T31-gx3v5

CO₂ Bias from Obs



CFC-11 Bias from Obs



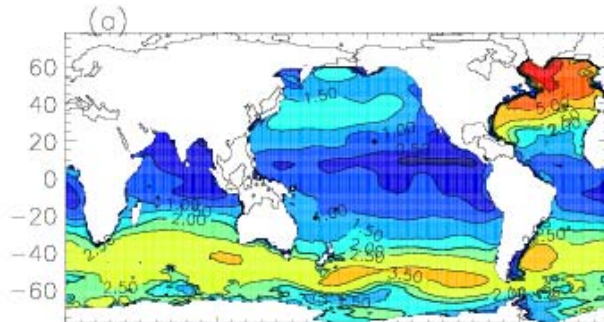
Uptake 42% below Obs

Uptake 11% below Obs

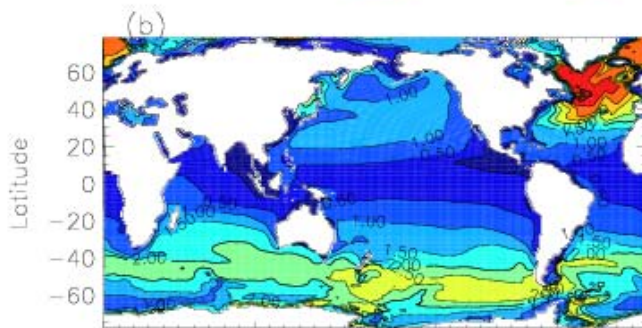
CFC-11 in 1994

Column Inventory

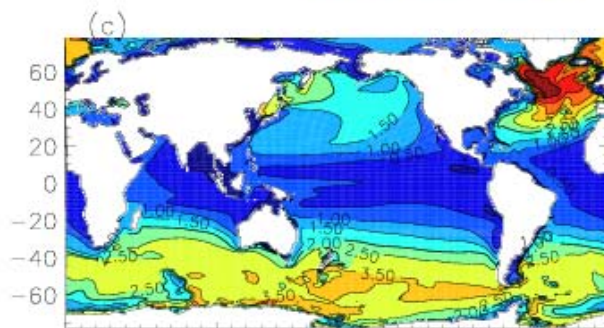
Obs



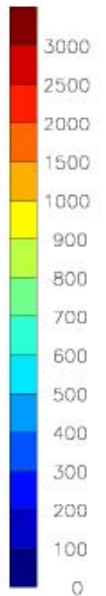
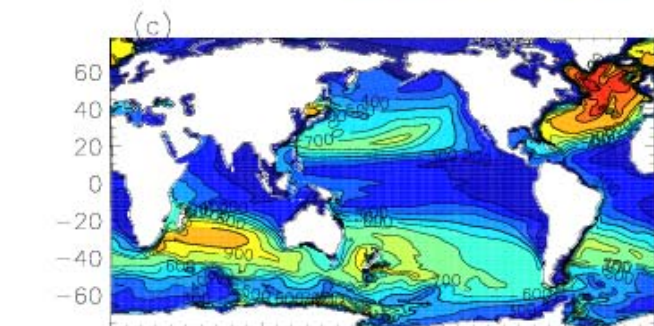
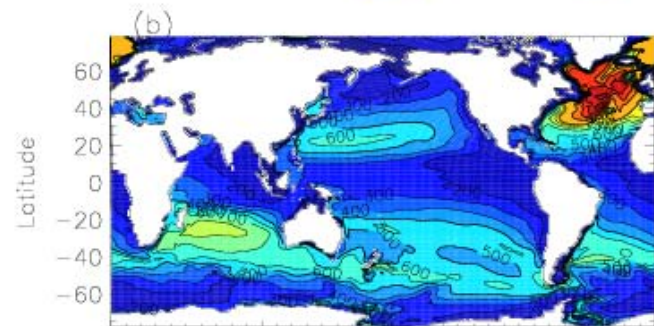
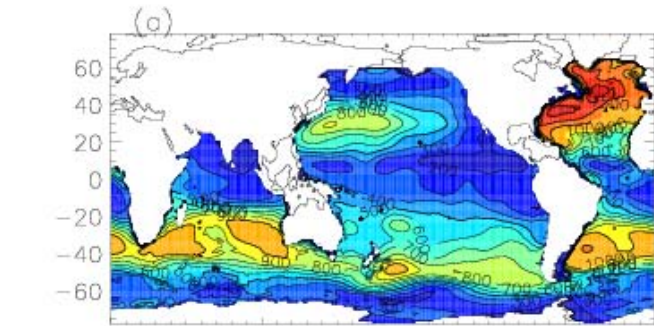
Ocean Model



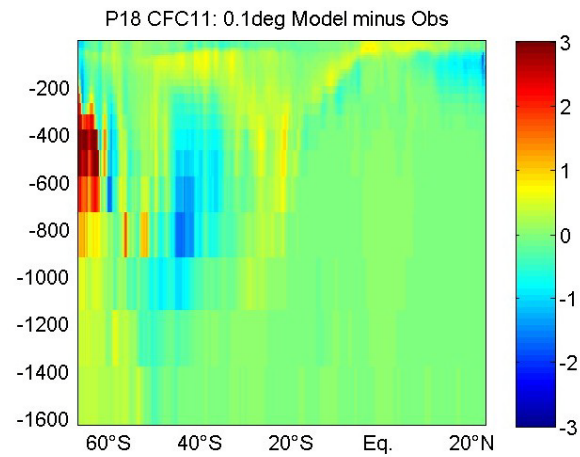
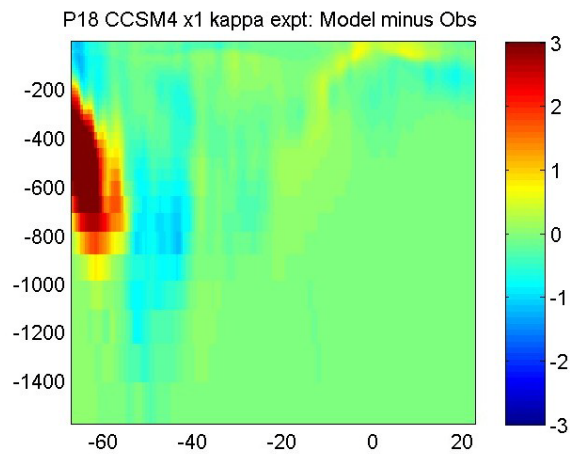
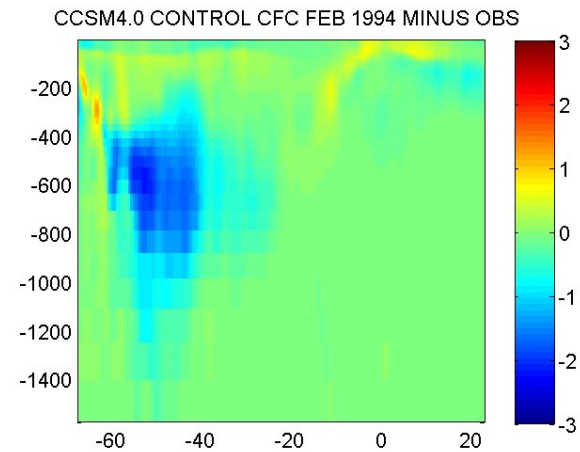
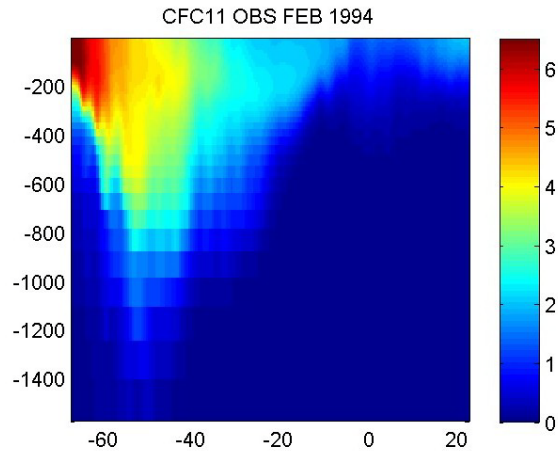
Coupled Model



Penetration Depth



CFC-11 Along P18



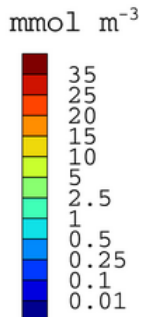
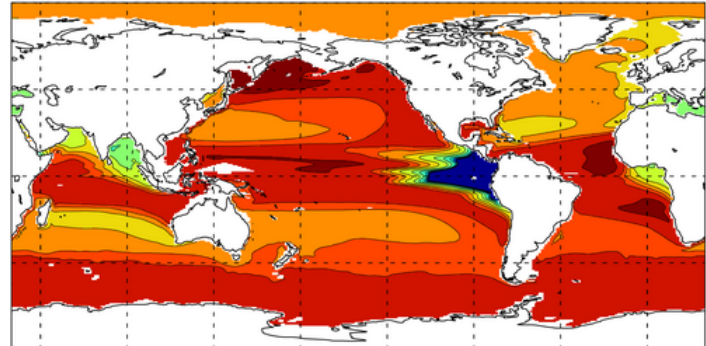
What next?

- Increased κ and resolving eddies appear to help. What should κ be?
- use 0.1° Watson runs for guidance
- Should know CO_2 uptake in x1 coupled CCSM4 in $O(\text{months})$

400m NO₃ & O₂ vs. Obs, yr 48-52

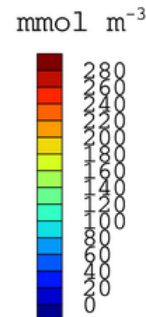
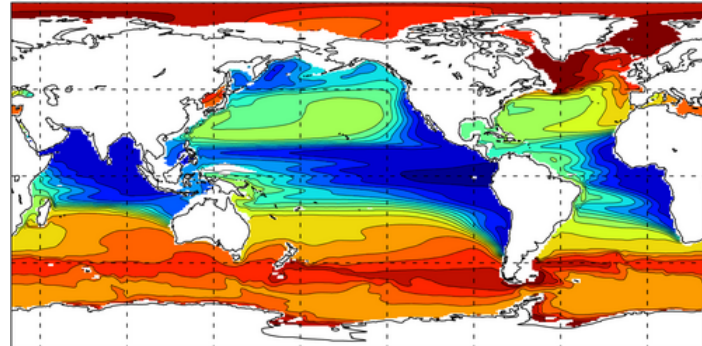
NO₃ - annual mean 408.78 m

G.brute.ccsm4.03 year 1966



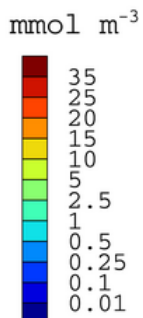
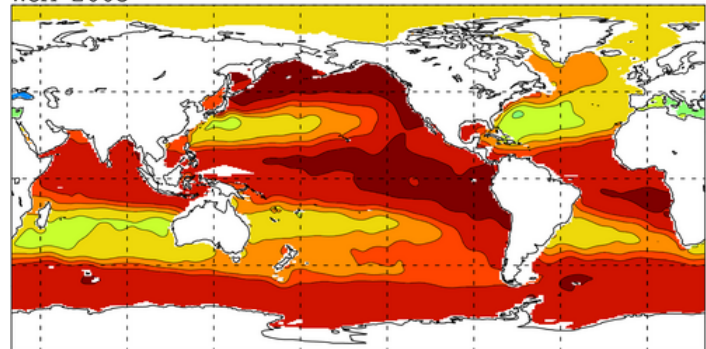
O₂ - annual mean 408.78 m

G.brute.ccsm4.03 year 1966



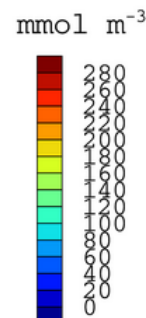
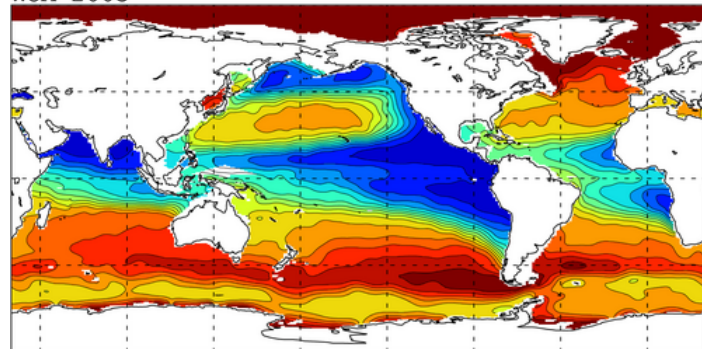
NO₃ - annual mean 408.78 m

WOA 2005



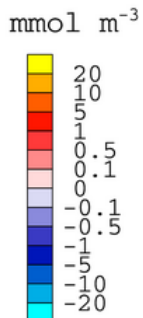
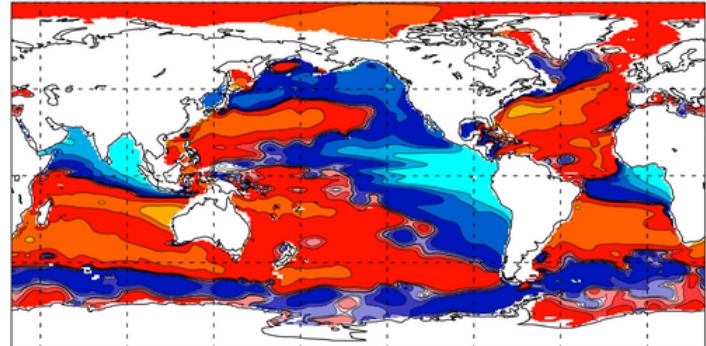
O₂ - annual mean 408.78 m

WOA 2005



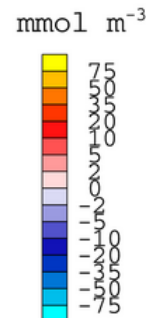
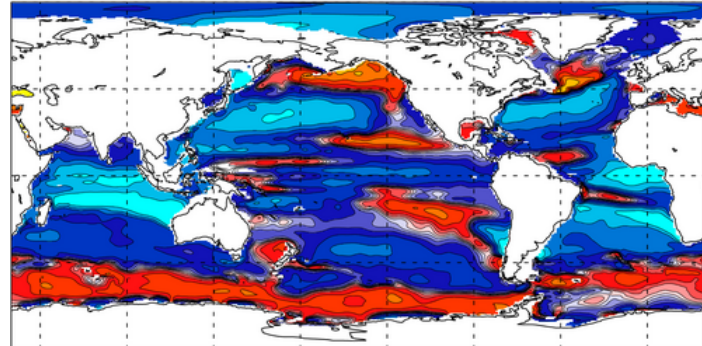
Difference

G.brute.ccsm4.03 - WOA 2005 year 1966

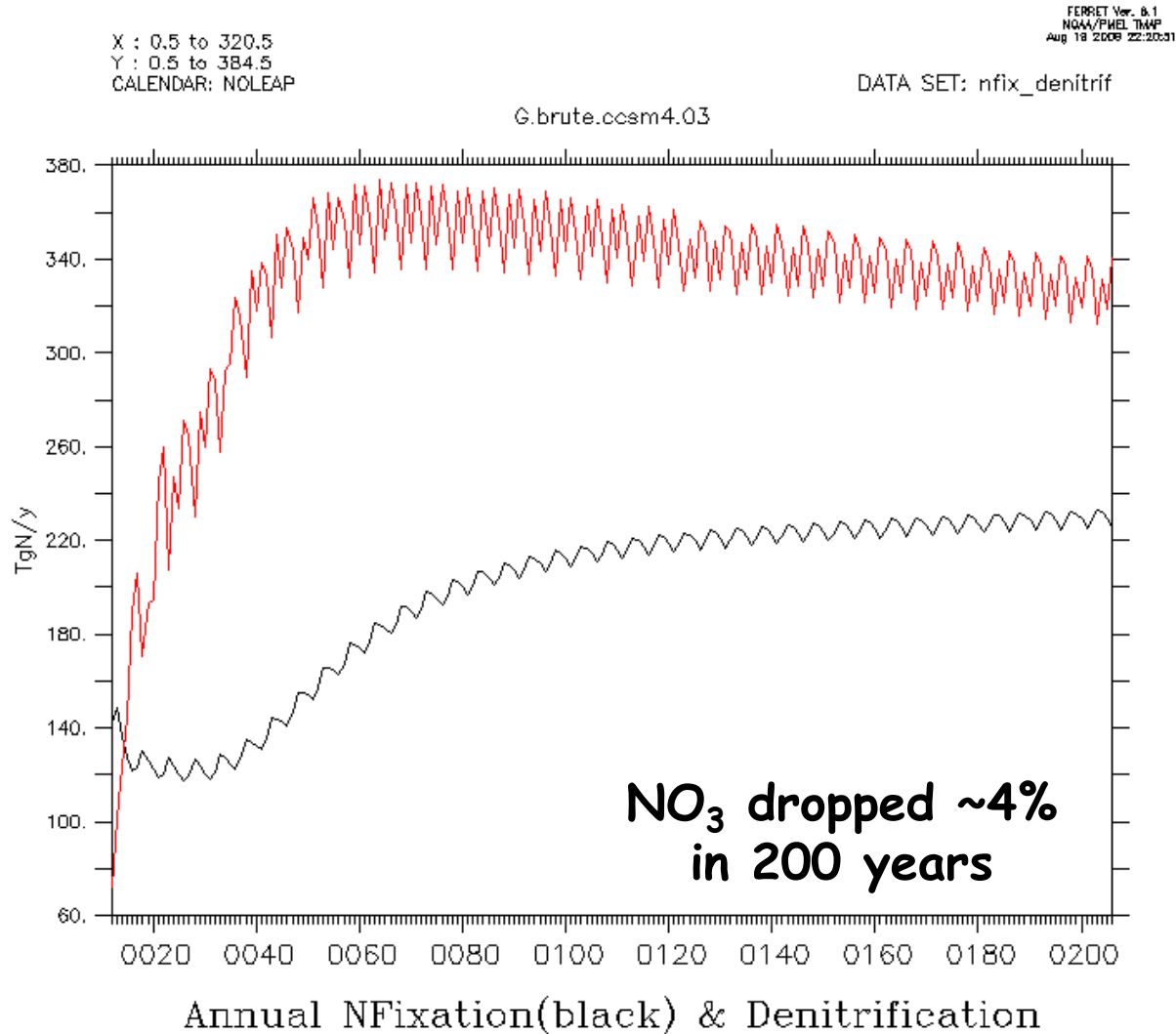


Difference

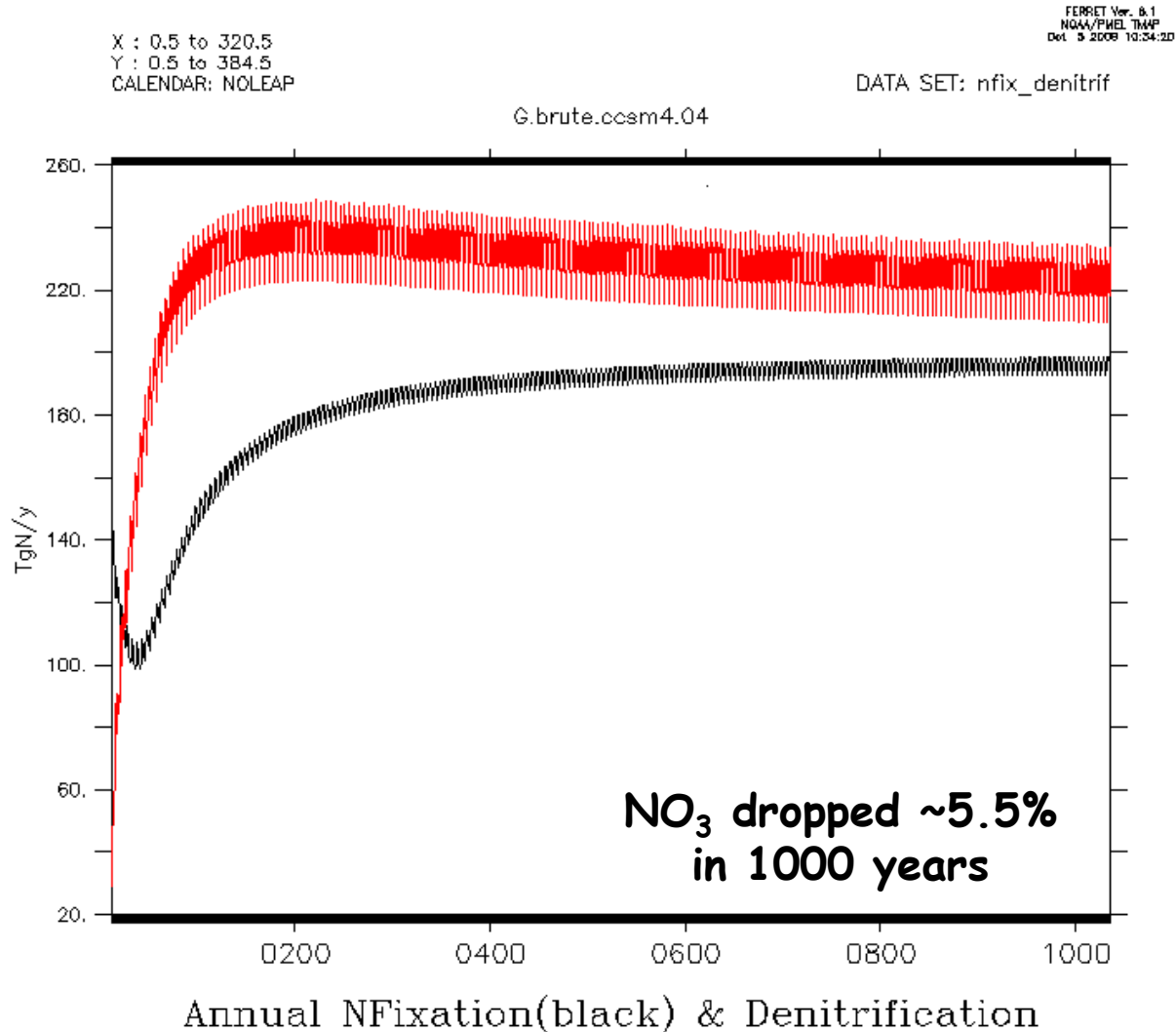
G.brute.ccsm4.03 - WOA 2005 year 1966



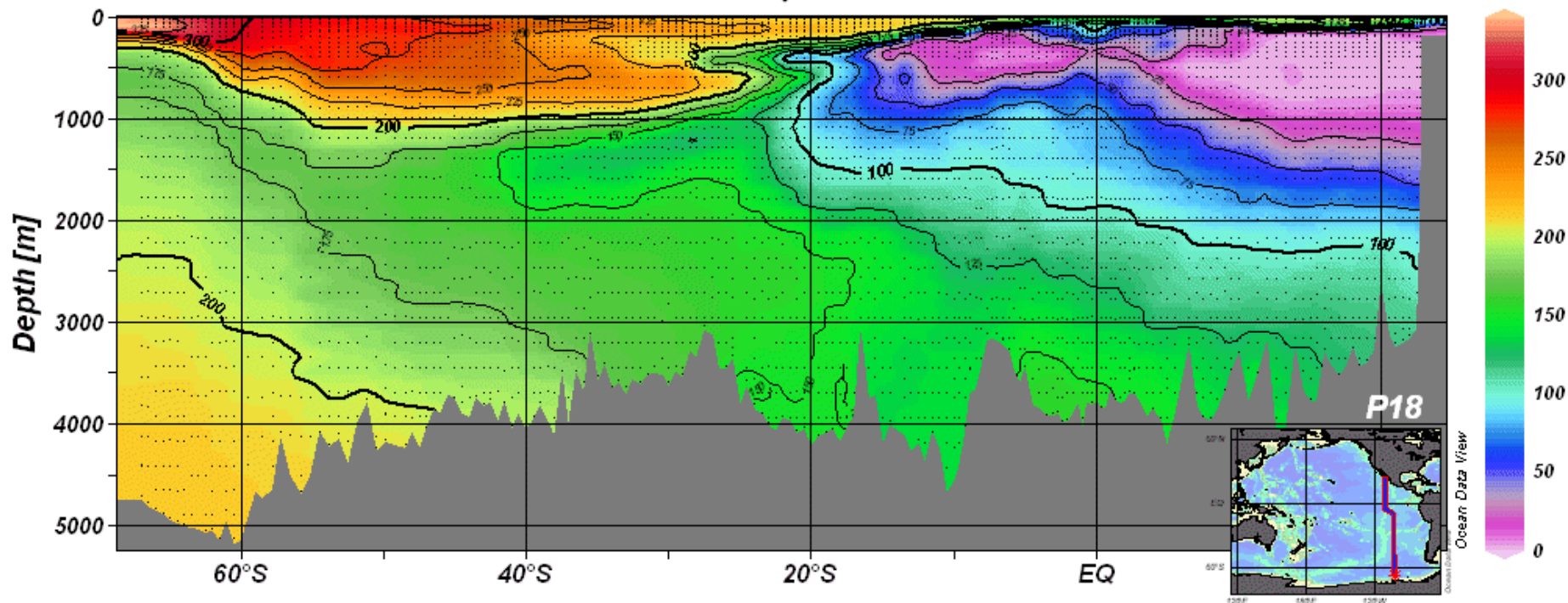
N cycle with coupled forcing



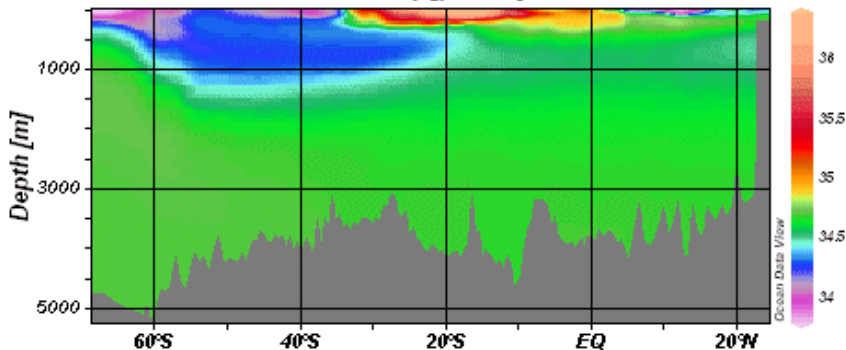
N cycle with coupled forcing fudged denitrification



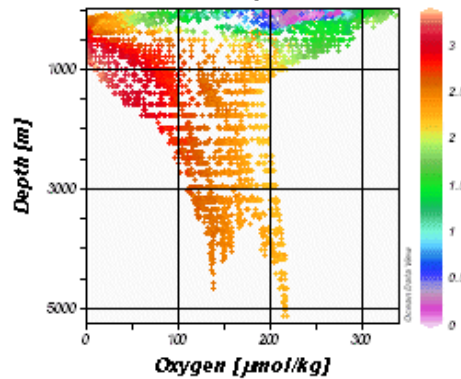
Oxygen [$\mu\text{mol/kg}$]



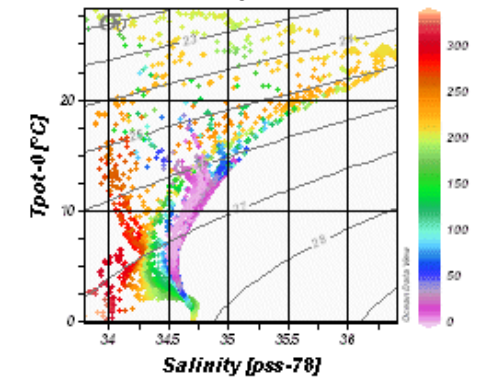
Salinity [pss-78]



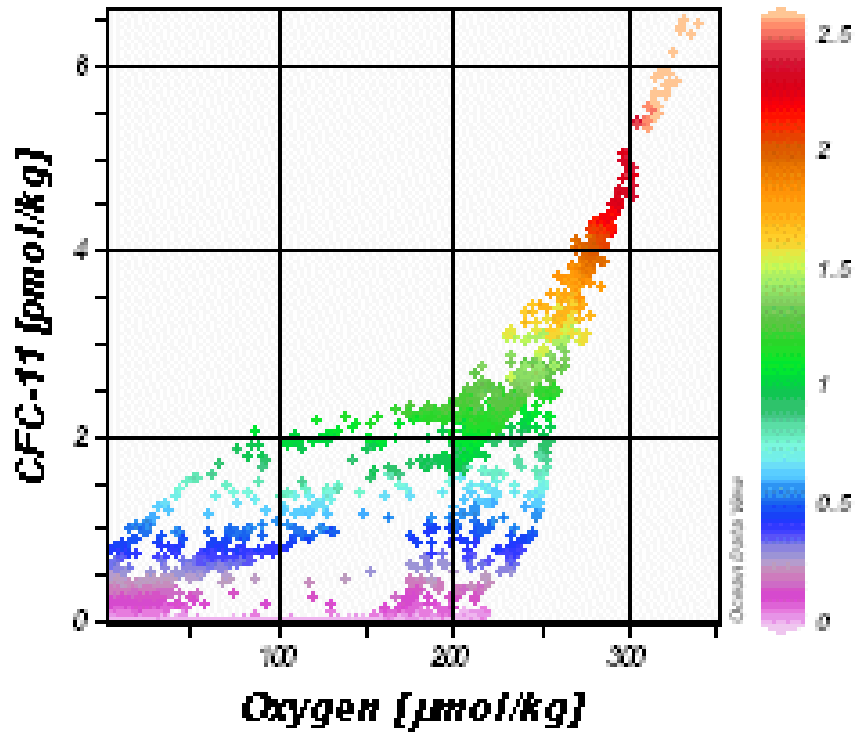
Phosphate [$\mu\text{mol/kg}$]



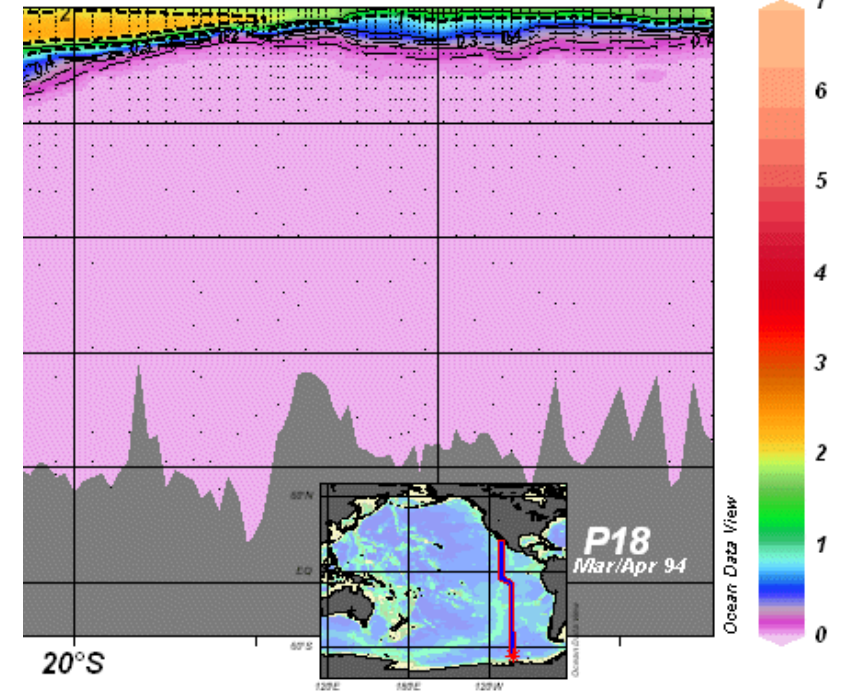
Oxygen [$\mu\text{mol/kg}$]



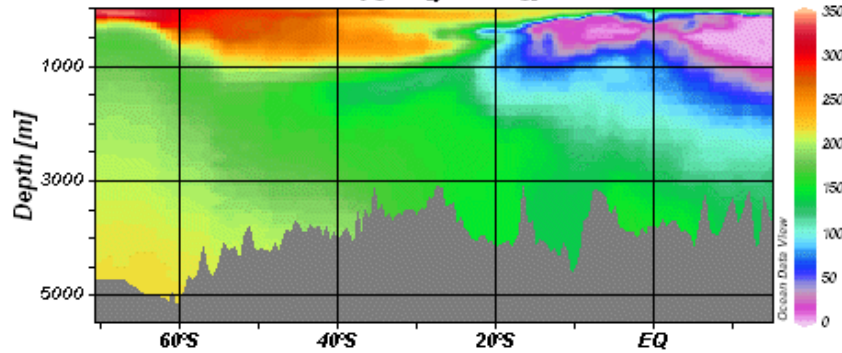
CFC-12 [$\mu\text{mol/kg}$]



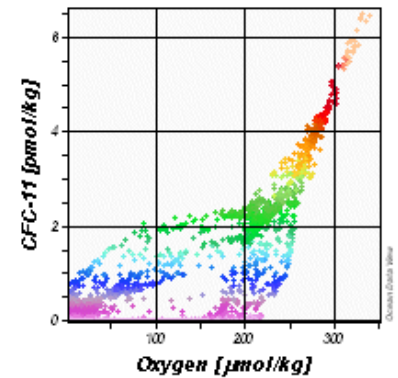
'kg]



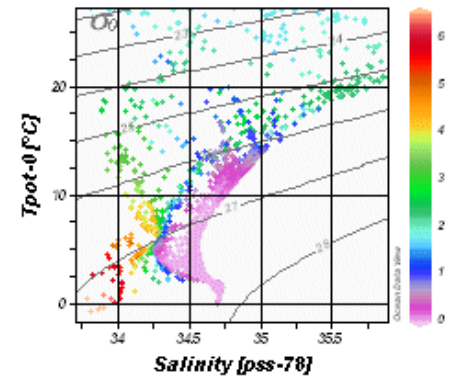
Oxygen [$\mu\text{mol/kg}$]



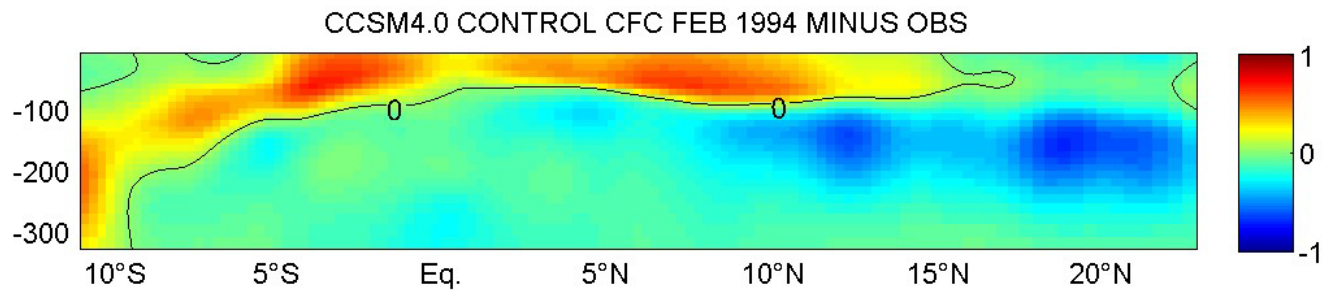
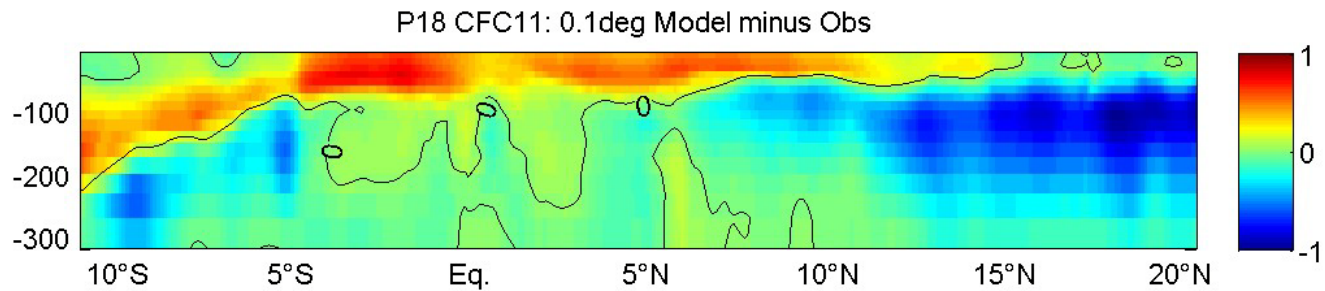
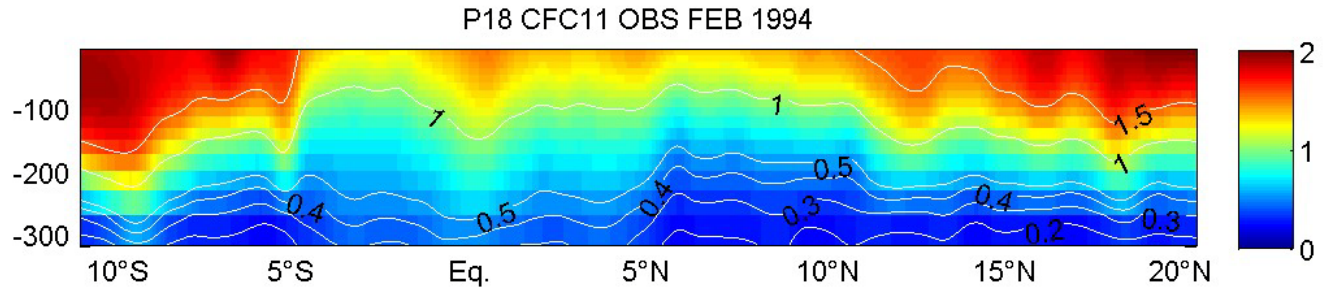
CFC-12 [$\mu\text{mol/kg}$]



CFC-11 [$\mu\text{mol/kg}$]



CFC-11 Along P18



Discussion

- CFC-11 only penetrates the shallower depths of the OMZ. Cannot be only diagnostic tracer.
- Observed ^{14}C Age can be compared to model Ideal Age
 - get Newton-Krylov solver working for 1° model
- Sensitivity experiments show sensitivity to Southern Ocean vertical mixing.
- Where is the water in the OMZ coming from?
 - Examine regional TTDs