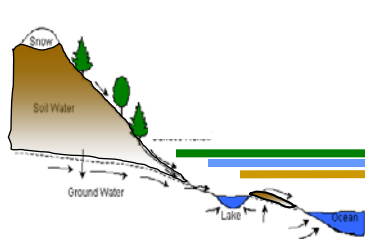
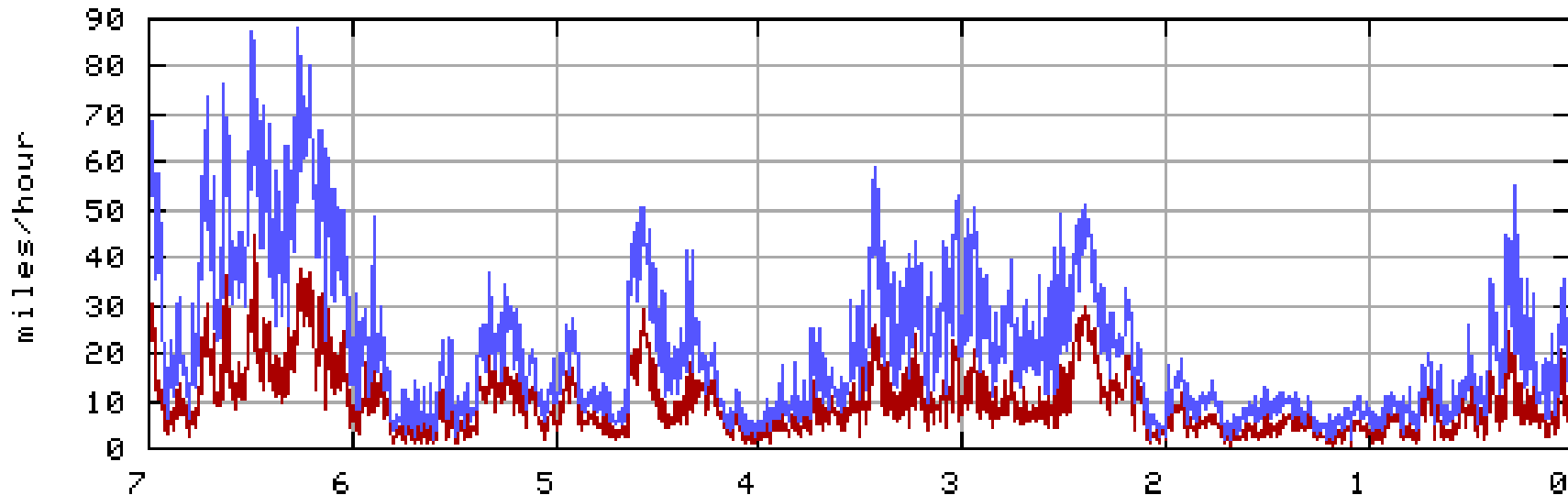
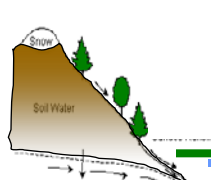


Welcome to Boulder



Wind Speed (red) and Peak Gust (blue)

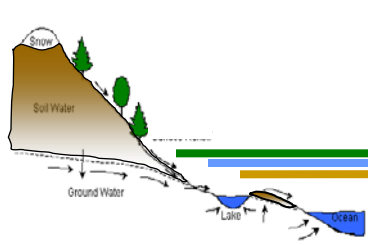




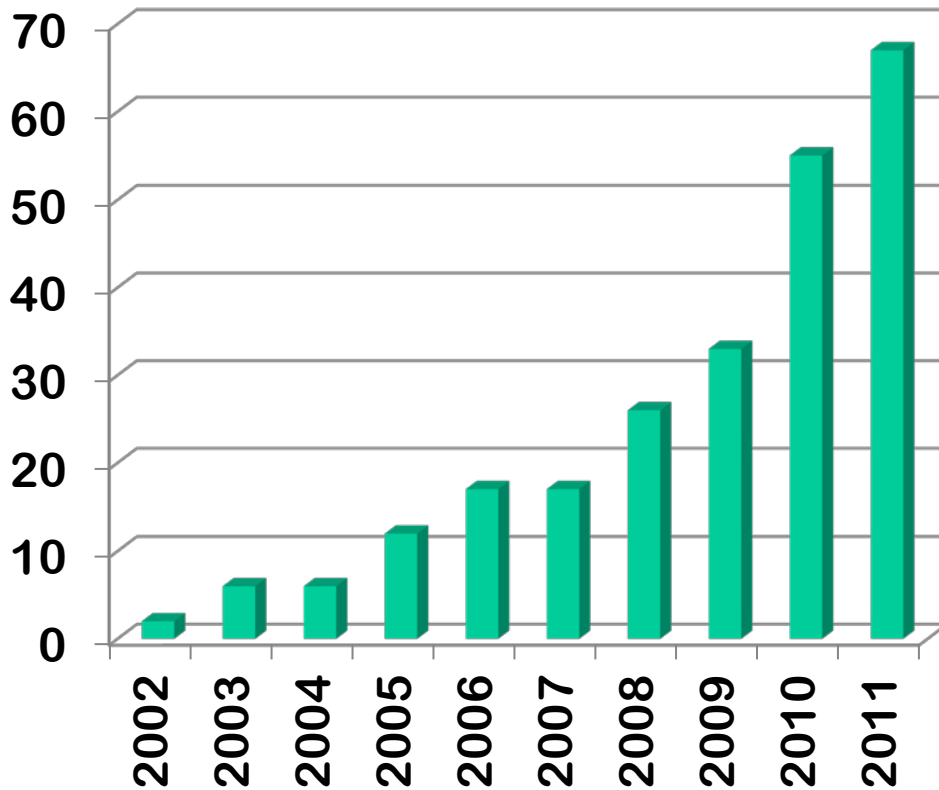
Poster Session (5-7pm with beer and wine!)

1. Maoyi Huang – Quantifying Uncertainties Associated with Hydrologic Parameters in CLM simulations
2. Zack Subin – Plans for Modeling Northern Peatlands in CLM
3. Xiaoying Shi – Impacts of anthropogenic forcing on global-scale river runoff
4. Sean Swenson – GRACE data and its application to CLM
5. Yongfei Zhang – Snow Data Assimilation: DART and CLM
6. Rahul Barman – Reducing uncertainties in energy & carbon fluxes for high latitude ecosystems in a land surface model using FLUXNET data
7. Matt Higgins – Biases in vegetation phenology in CLM and projected Arctic phenology
8. Sean Swenson – GRACE
9. Forrest Hoffman – CLAMP2 and ILAMB
11. Peter Thornton – Evaluation of CLM against multiple observational and experimental constraints: FACE, SPRUCE, EBIS, PiTS, and NACP sites
12. Jiafu Mao – Comparison of CLM predicted GPP, LAI, and NDVI against remote sensing-based estimates
13. Jen Aminzade – Progress towards applying the CLM Crop Model in the Southern Great Plains
14. Adam Schlosser – Using CLM hydrology in an integrated model to assess water-food-climate risks: A case study for the Zambezi River Basin
15. Peter Thornton – CSSEF plans for 2012
16. Keith Lindsay – The Impact of Climate Change on the Southern Ocean Carbon Cycle in CESM1-(BGC) CMIP5 Experiments
17. Dave Lawrence – Permafrost projections in CCSM4
18. Jianyang Xia – Structural determinants of terrestrial carbon storage capacity in biogeochemical models
19. Ying Sun – Understanding the Effects of Mesophyll Conductance on Land Surface Fluxes Using a Modified CLM4
20. Dave Gochis – Hydrologic enhancements, infrastructure and applications with CLM
21. Bing Pu – Vegetation feedbacks that amplify global warming

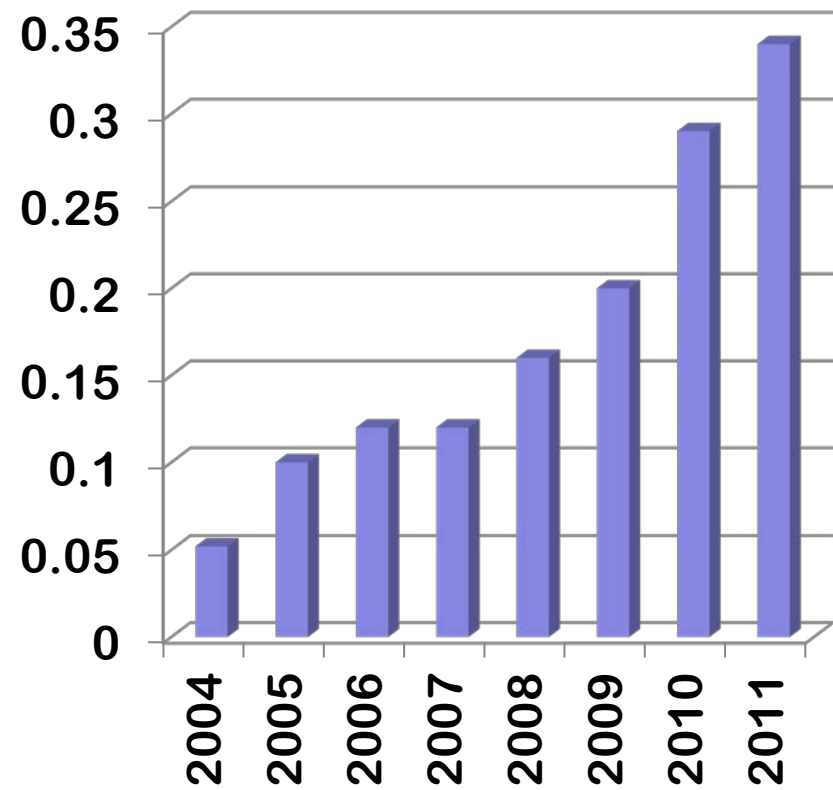
CLM at AGU



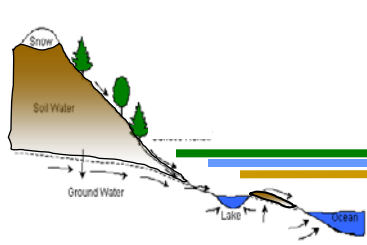
Presentations with CLM in abstract or title



% of AGU presentations that included CLM



Announcements



- **Group dinner on Thursday night at Riffs (probable) next to Boulder Bookstore on west end of Pearl St. walking mall**
- **Informal CLM Help Session – NCAR, Mesa Lab, Chapman Room (note room change)**
- **Thursday, 3:15 - ? Sam Levis and Erik Kluzek will be available to answer technical or scientific questions about CLM in a small group setting or one-on-one. This will be very informal. Please contact Sam Levis (slevis@ucar.edu) if you plan to attend.**

CESM Tutorial: July 30 – August 3, 2012

NCAR, Boulder, CO

- Lectures on simulating the climate system
- Practical sessions on running CESM, modifying components, and analyzing data
- Targeted at graduate student level
 - Max 80 students with financial support for up to 40 students
 - Acceptance criteria:
 - Preference given to early career graduate students, though we will aim for a mix of graduate students, postdocs, and early career research scientists and faculty
 - Project descriptions and their fit with broader CESM goals and activities
 - Balance attendees across institutions
- How to Apply:
 - Application website online at:
<http://www.cesm.ucar.edu/events/tutorials/073012/announcement.html>
 - Application deadline: **March 23, 2012**
 - Accepted students informed by late April
 - Questions should be directed to Dave Bailey(dbailey@ucar.edu)