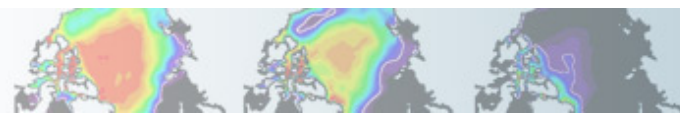
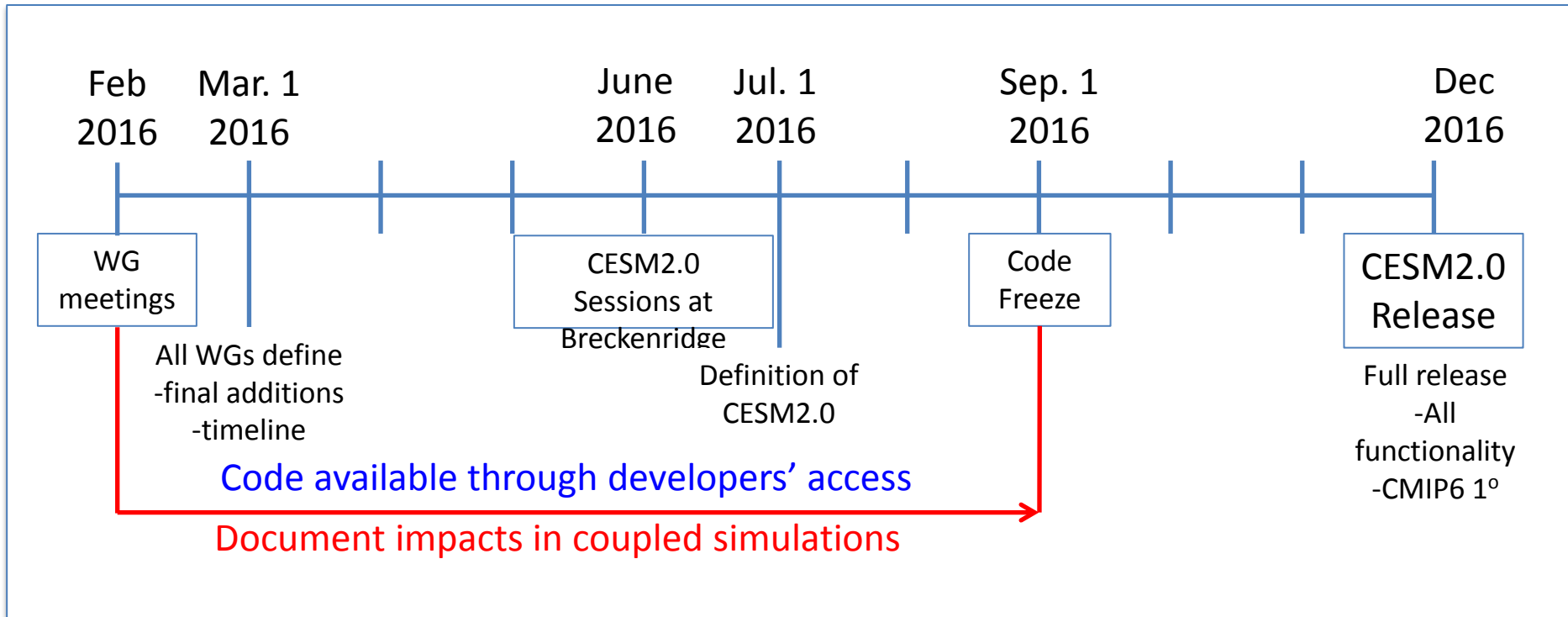


WACCM for CESM2: Joint Issues

A. Gettelman, L. M. Polvani, M. Mills
+ “WACCM Team”



CESM2 revised timeline



Pending approval by the SSC

Probably need to start Control and 20th century by sept

Proposed WACCM Configurations

- WACCM6 L70, 1°, FV
 - Specified and full chemistry
- WACCM6 L110, 1°, FV
 - Matches a L64 CAM
 - Specified and full chemistry
- ~~• WACCM6 L110, 2°, FV~~
 - ~~– Specified and Full Chemistry (Comp set only)~~
- WACCM-X 2.0
 - Includes description of ionosphere

Current developments for CESM2

- Pace CAM6 Physics

- CCMI chemistry (Done)

- WACCM6 with CAM6 physics: functional (Done)

- WACCM6 climatology: Temp, RH, SAD_{ice}, O₃

To CAM

- Adjustments to Gravity Waves?

From CAM

- Tune GWD for T, QBO, SSW, SAO, Tides

- Forcing data sets

- Volcanic forcing (Neely, Schmidt database)

- Solar forcing (new specification)

- Chemical forcing from WACCM

Timing

- Finish WACCM mods to CAM physics (1-2 months)
- Will need to discuss any changes to Momentum
- Start tuning GWD for Temps and SSWs by April
 - Aiming for June-Sept finish
 - 90% tuning done with current GW schemes
 - Tune in WACCM-SC (beginning)

Questions for other WGs...

- For ChemWG: Forcing is 3D or daily zonal means?
- What are plans for surface stress/wave drag?
 - CESM co-chair level group working on this
 - Should not do any more coupled tuning until we decide.
- Are recommended/supported configurations consistent with rest of CESM? (1°, FV, 70L)
- When does WACCM need to be ready?
 - How are we spinning up an ocean?
 - Careful on configurations between CAM/WACCM
 - What are we running (multiple ensembles)