

# Climate Highlights from CESM2 / CVCWG Updates

Adam Phillips and Susan Bates  
CGD/NCAR

Thanks to Clara Deser



U.S. DEPARTMENT OF  
**ENERGY**

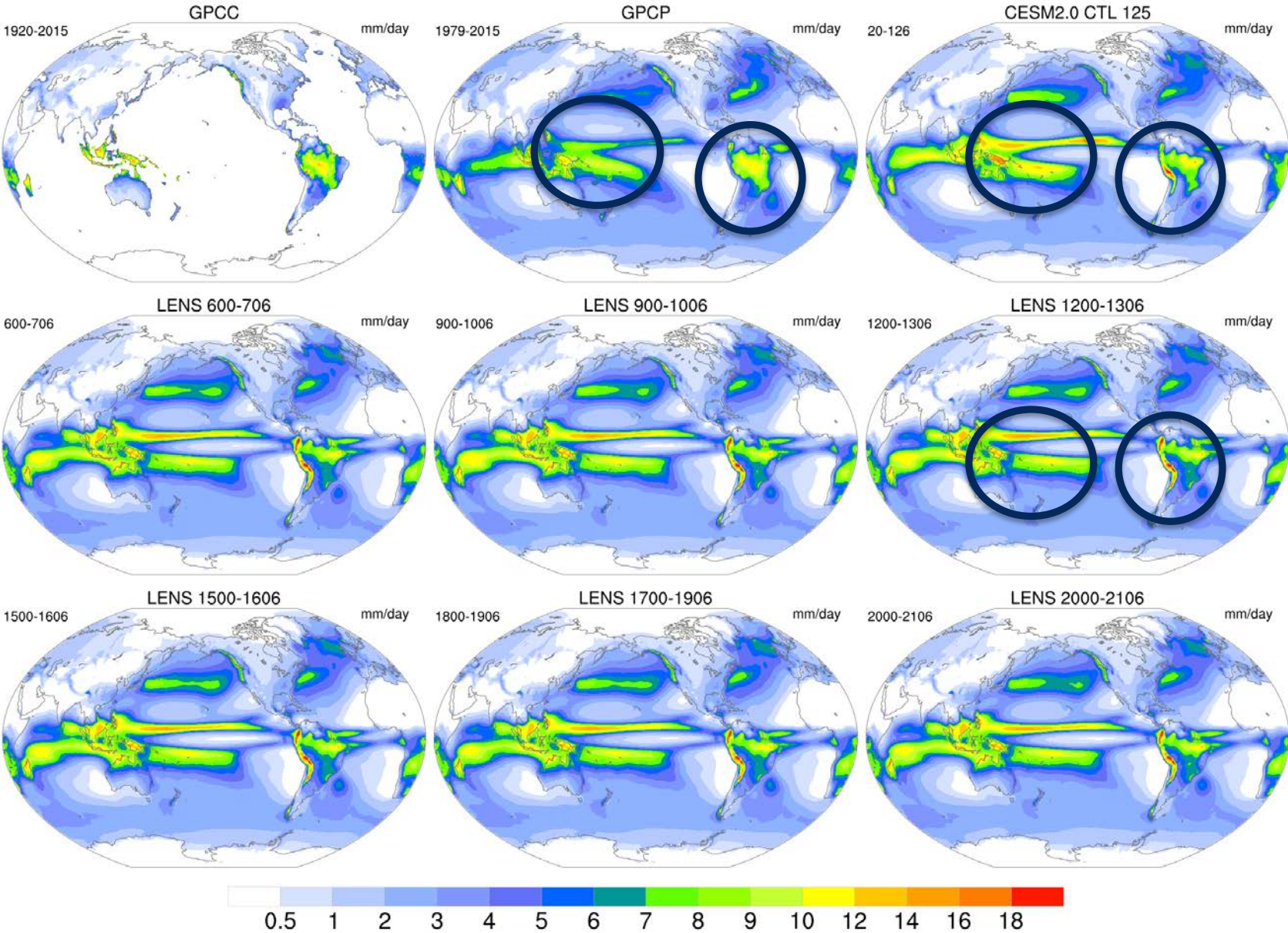
Office of  
Science

## CESM2 Pre-industrial control run (125)

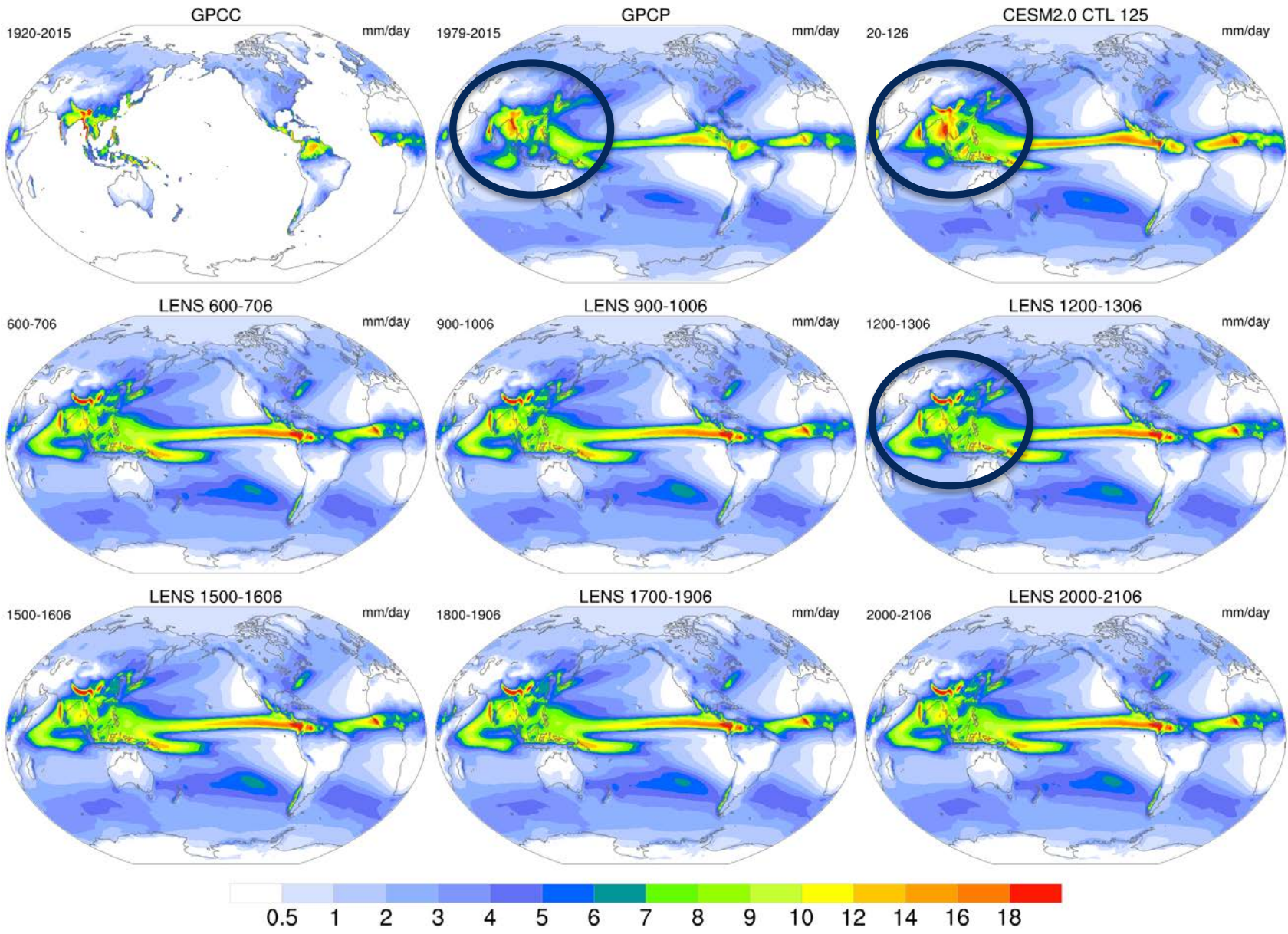
- Not final configuration, uses older land model parameters, old topography file, dust not tuned, CMIP5 emissions, etc.
- Only 126yrs long, not in equilibrium
- Diagnostic plots are available on the CESM1.5 simulations page here:

[http://www.cesm.ucar.edu/working\\_groups/Atmosphere/development/cesm1\\_5/](http://www.cesm.ucar.edu/working_groups/Atmosphere/development/cesm1_5/)

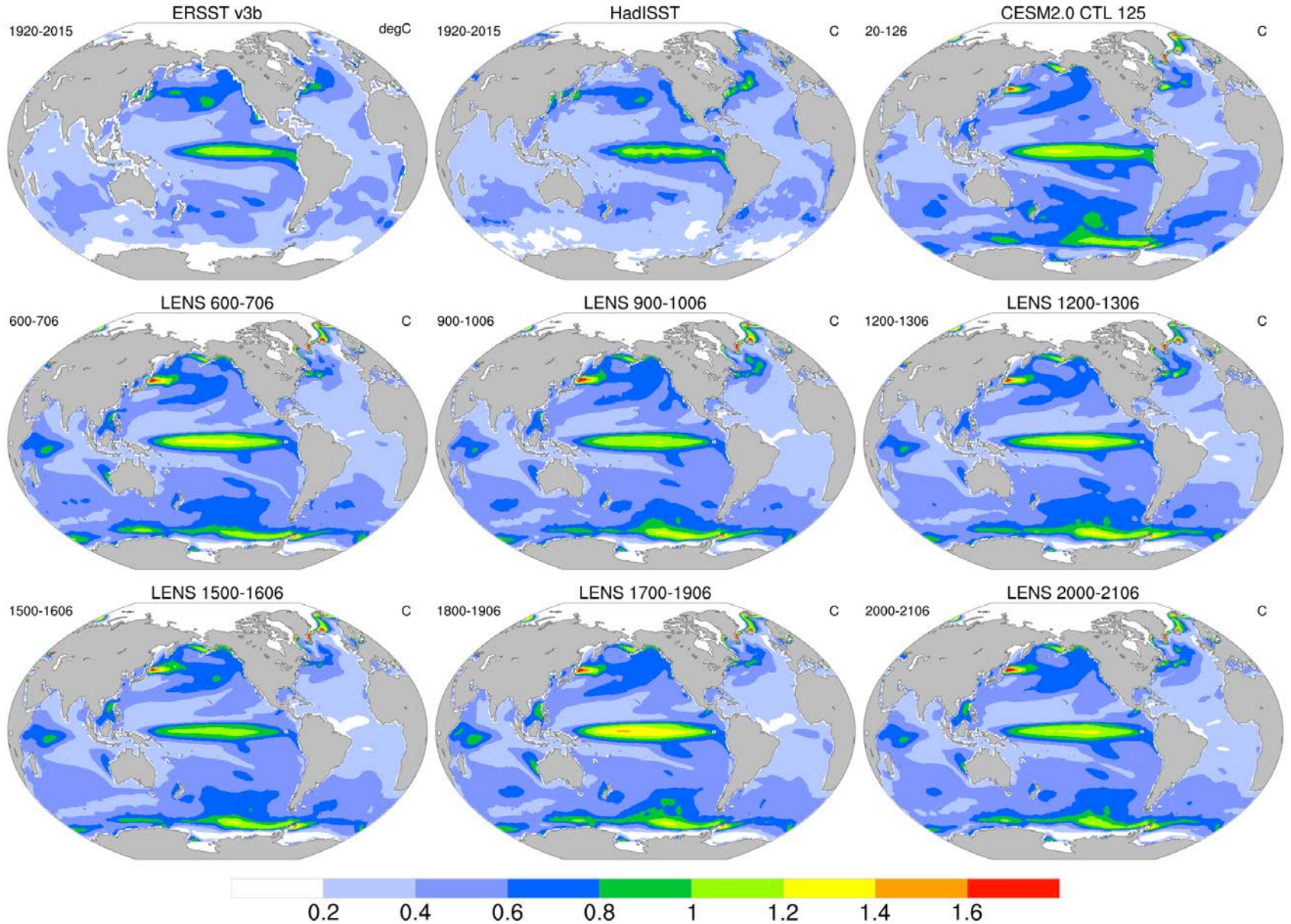
# Precipitation Means (DJF)



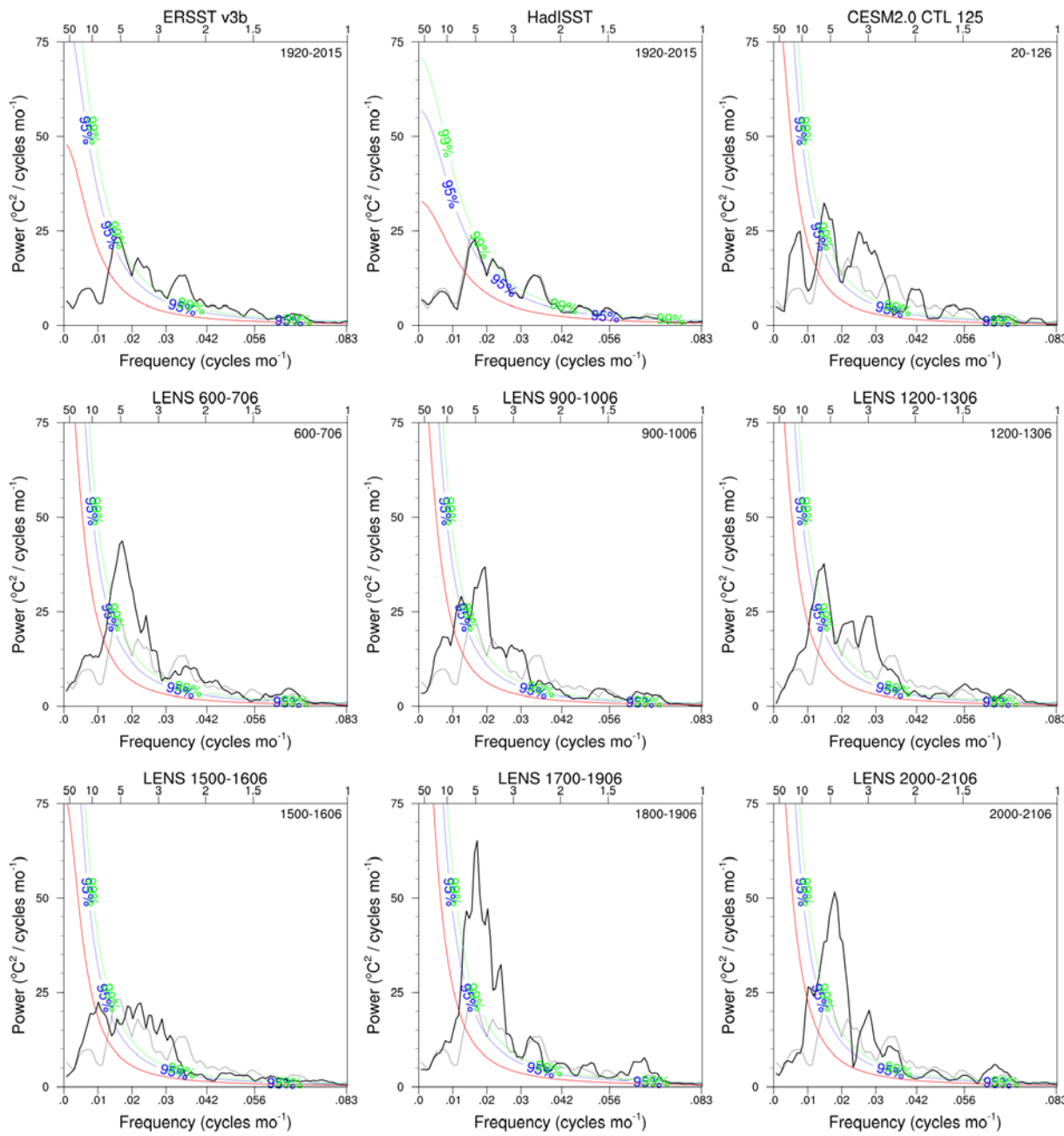
# Precipitation Means (JJA)



# SST Standard Deviations (DJF)

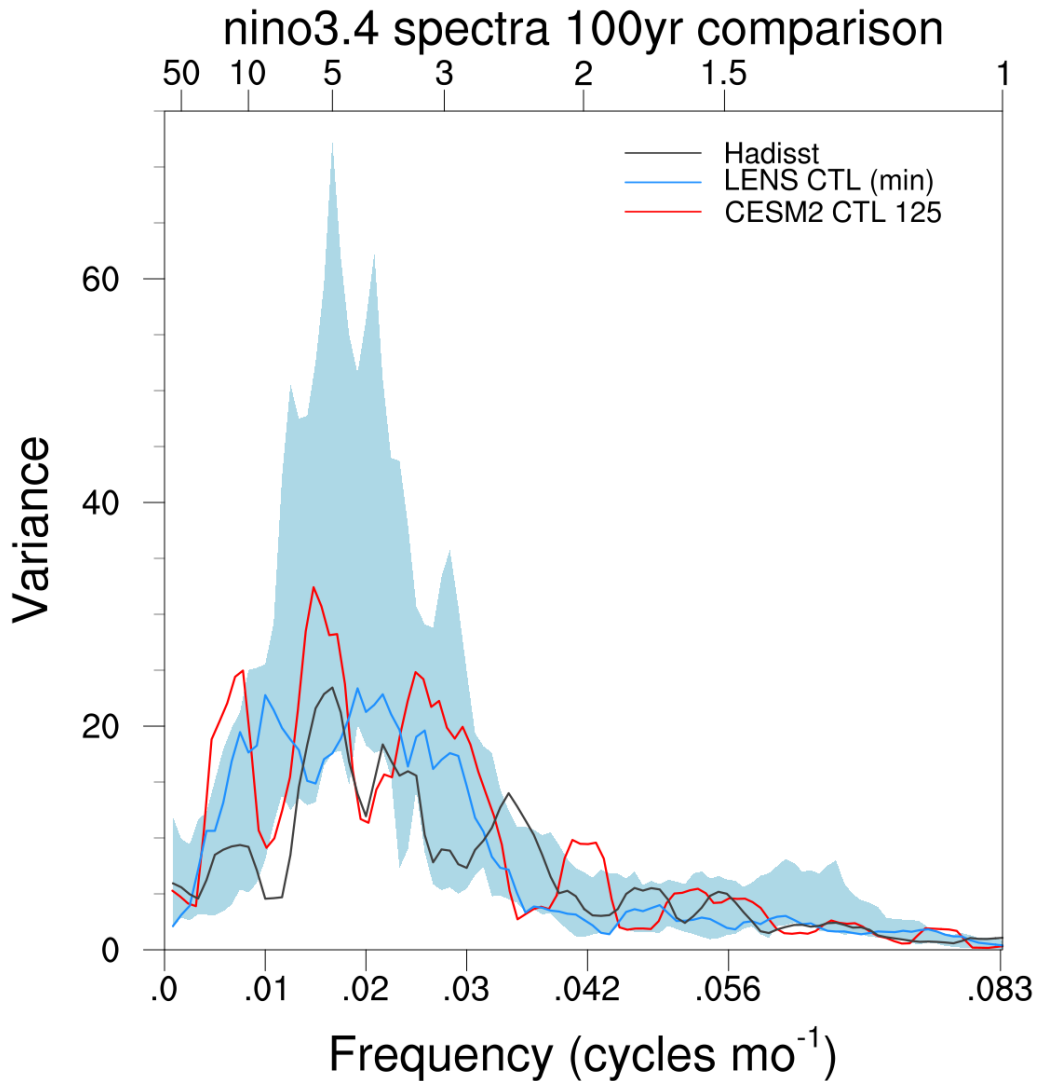


# Nino3.4 Monthly Spectra

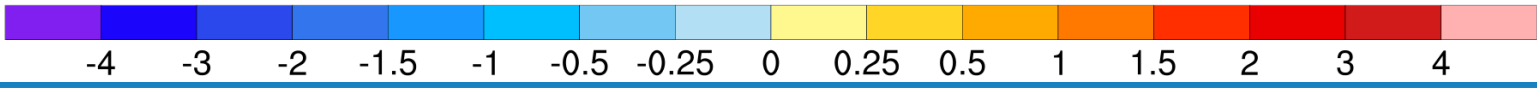
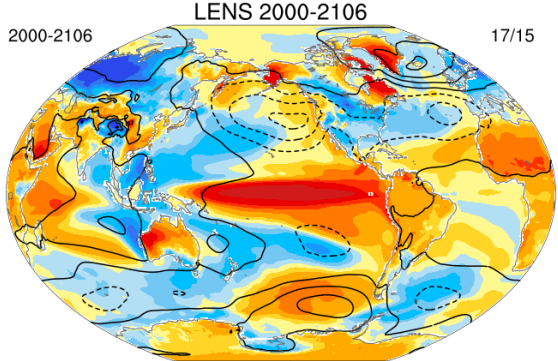
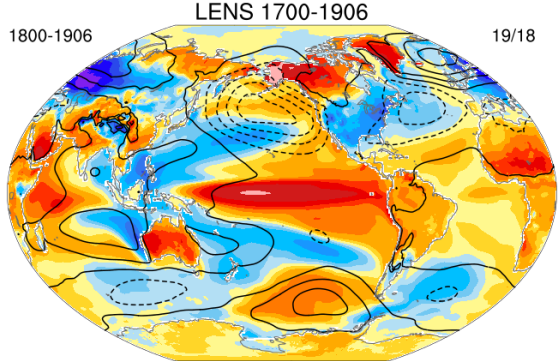
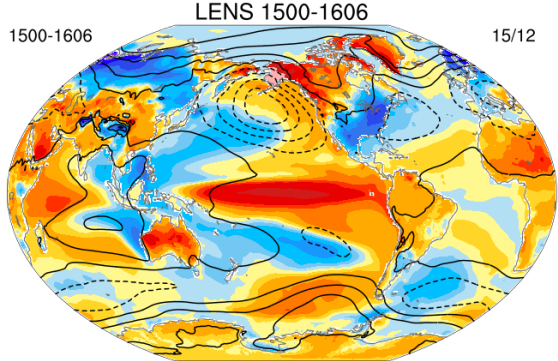
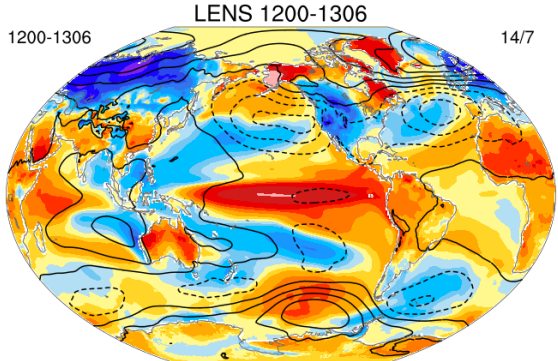
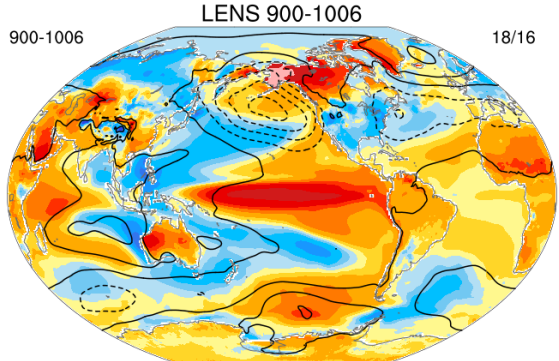
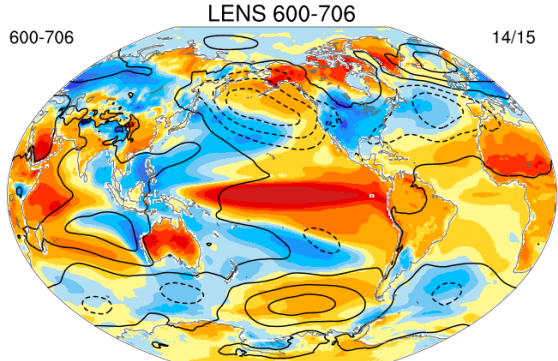
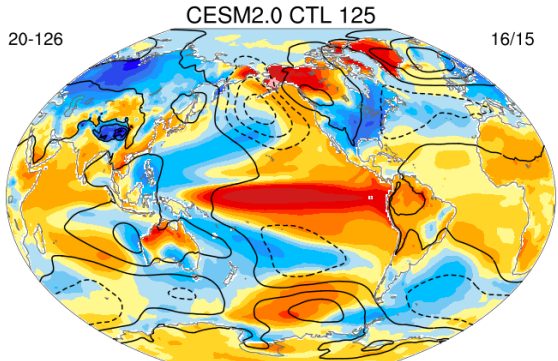
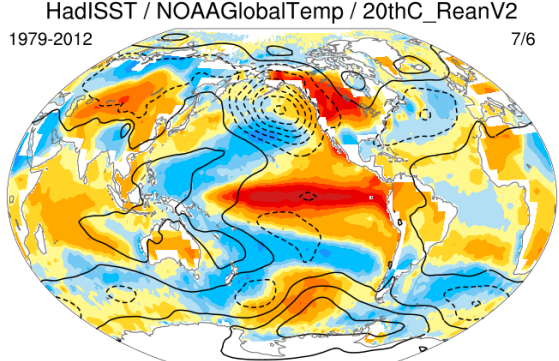
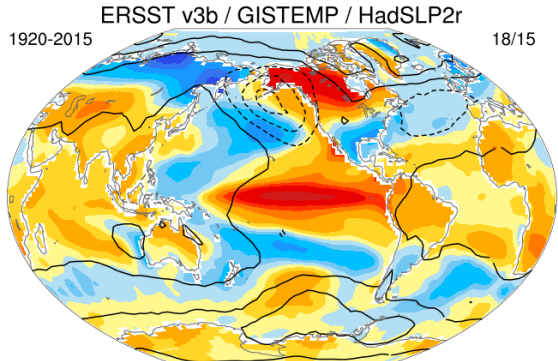


# Nino3.4 Monthly Spectra

## 100yr LENS Control Periods Shaded

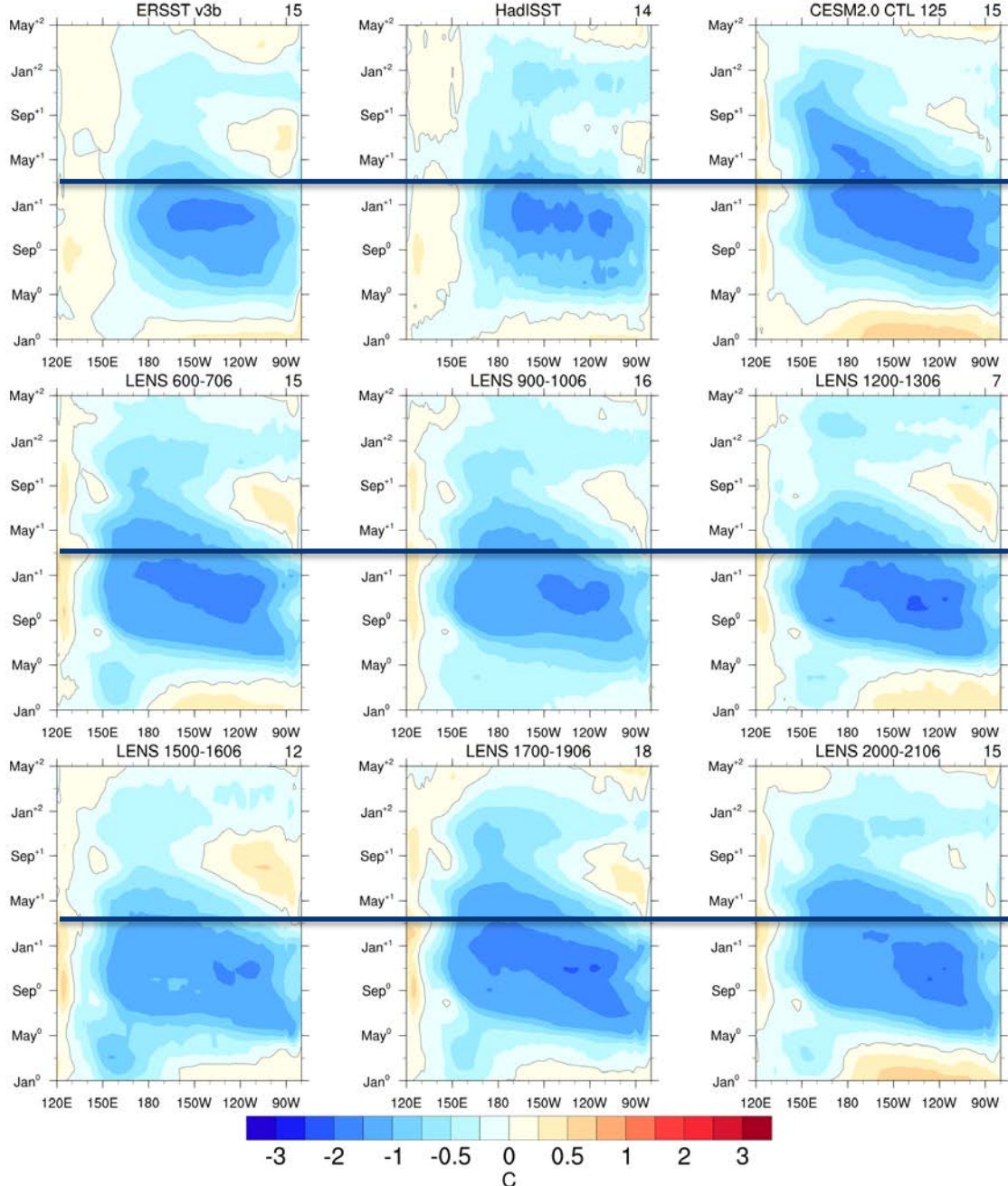


# Nino3.4 SST, TAS, PSL Spatial Composite (DJF+1)

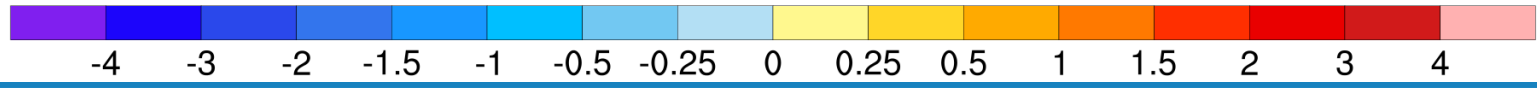
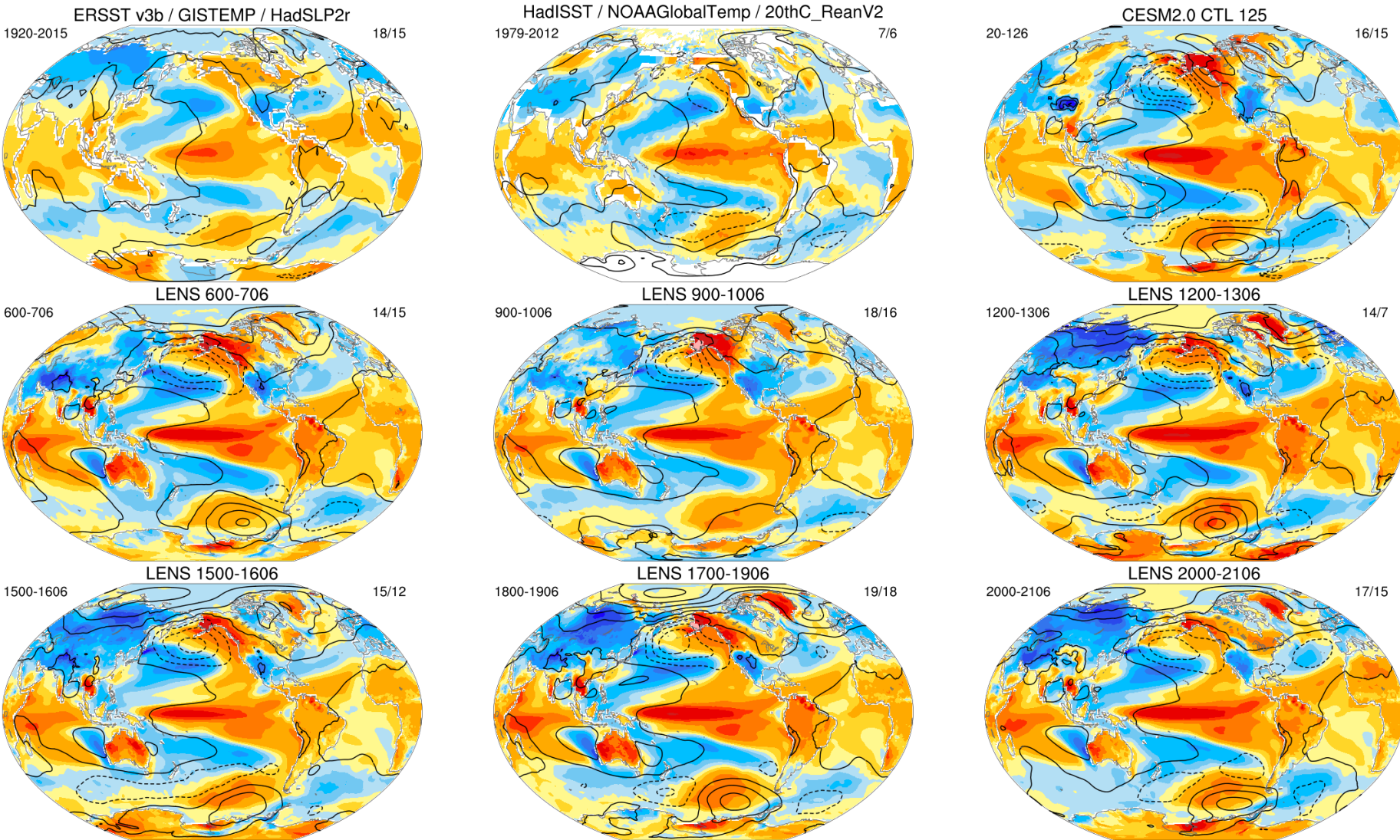




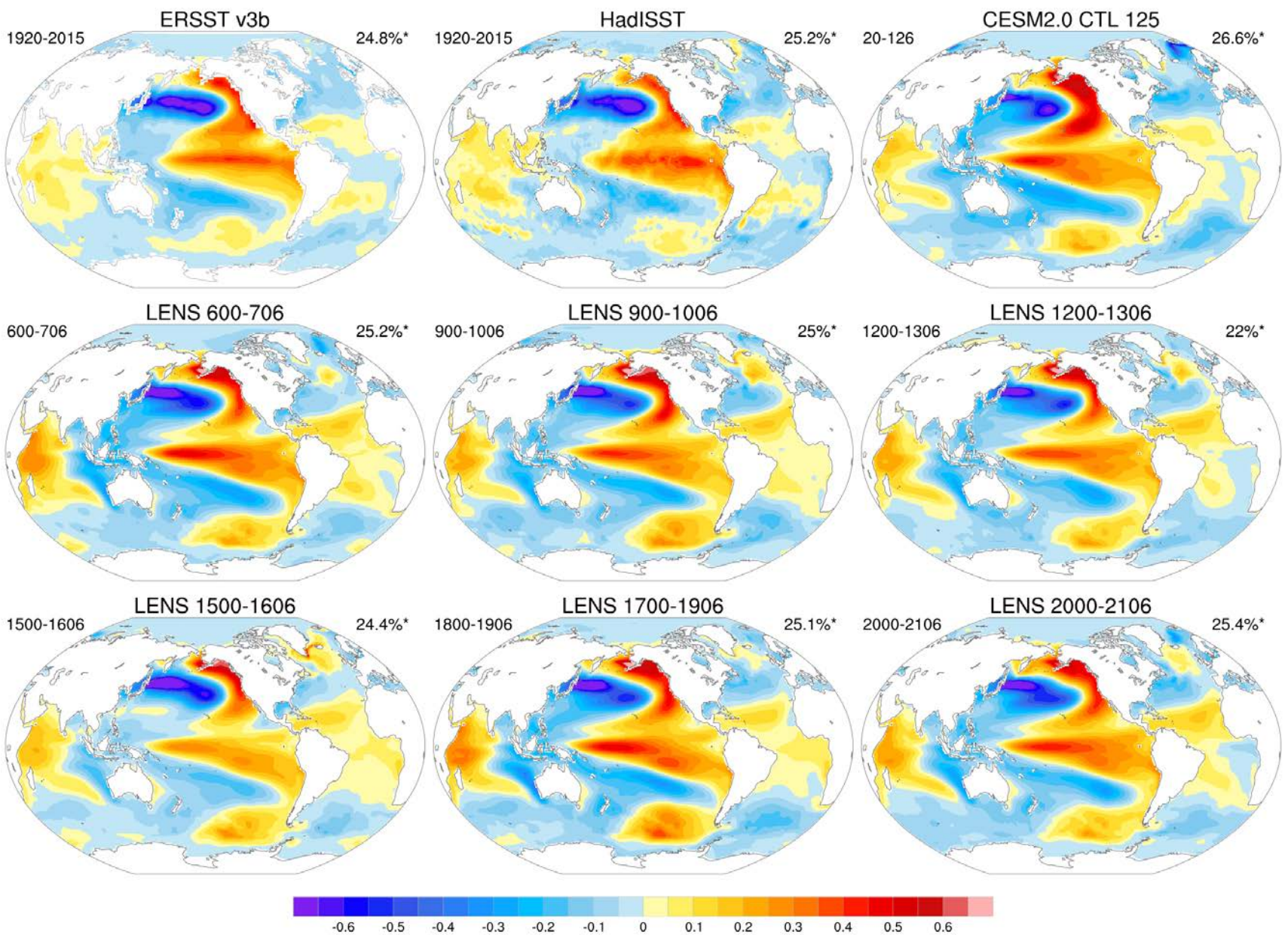
# La Niña Hovmöller Composite



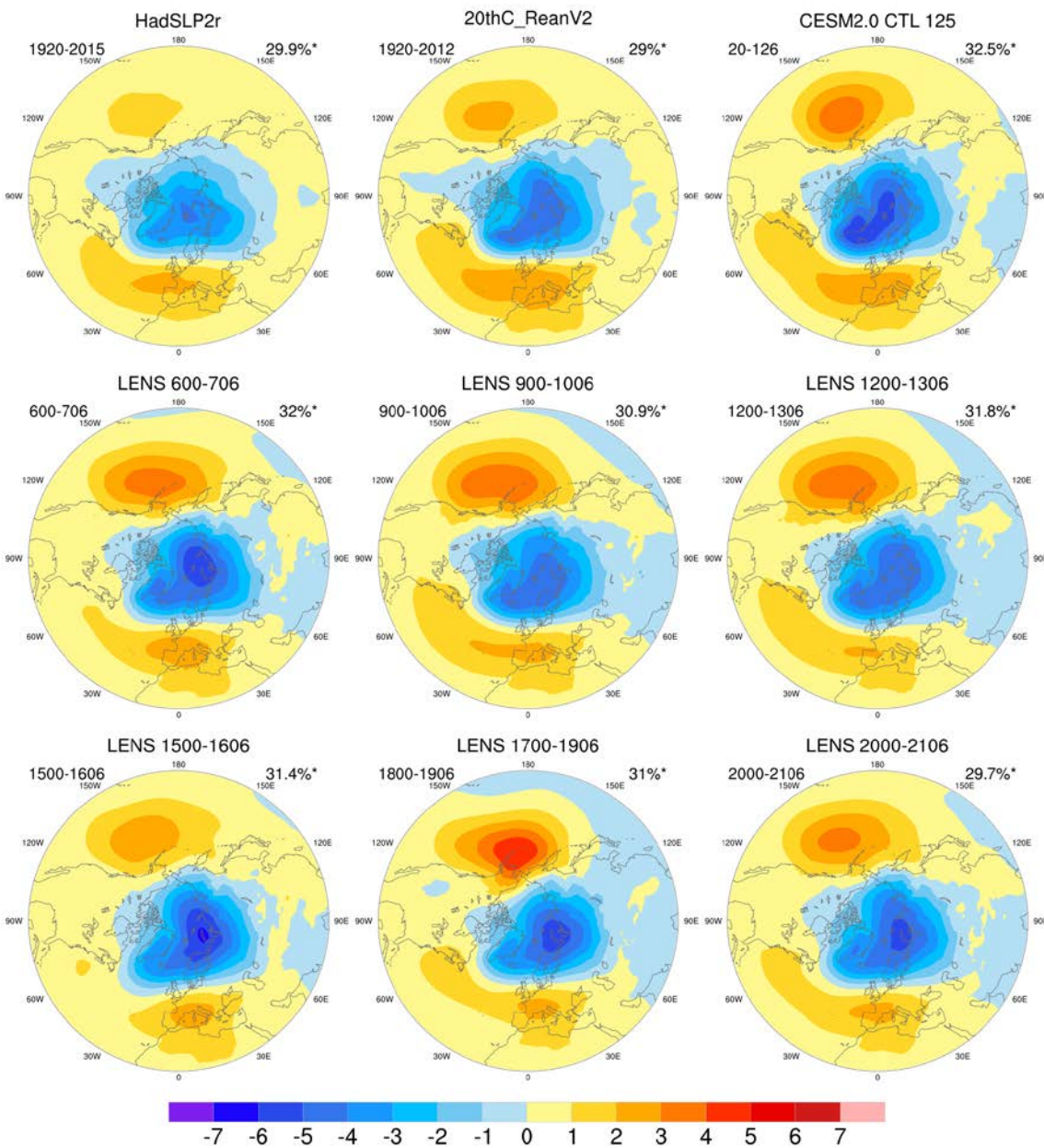
# Nino3.4 SST, TAS, PSL Spatial Composite (MAM<sup>+1</sup>)



# Pacific Decadal Oscillation (monthly)

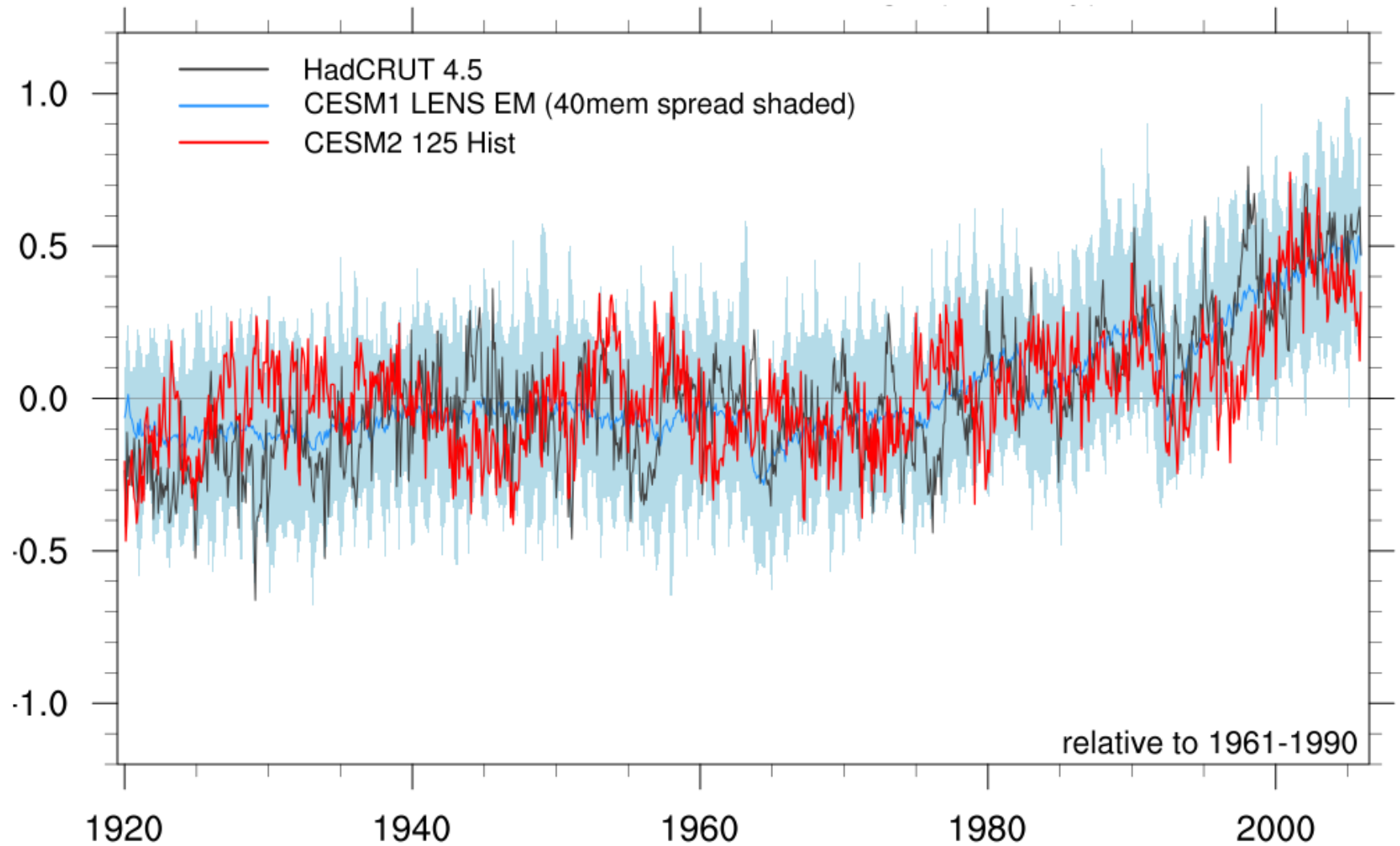


# Northern Annular Mode (DJF)



# CESM2 125 Historical Simulation

## 2m Air T Global Area-Average (monthly)



# Simulations recently completed(\*) or in progress

- CAM5.2 10-member GOGA ensemble 1880-2015\*
- CAM5.2 AMIP w/prescribed sst/ice from LENS PI Control 200yrs\*
- CESM1.3 0.25° atm/Ind coupled to 1° ocn/ice
  - Includes PI control\*, 1% ramp\*, abrupt 4xCO<sub>2</sub>\*, and three each of 20<sup>th</sup> Century, RCP2.6, and RCP8.5. (Planned completion by end of 2017.)
- CESM1.1 Idealized IPO pacemaker simulations
  - Relax SST to IPO+/-/neutral states
- CAM5 decadal prediction hindcasts (lead: Steve Yeager yeager@ucar.edu)
  - 61 start dates (1954-2014) 10 years in length
  - ASD project to add 30 members for each start date
  - ~30 members completed. Data already available upon request.

# CVCWG Planned Simulations (Jun-Dec 2017)

- CMIP6 simulations with CESM2
  - Flux Anomaly MIP (FAFMIP)
  - Detection/Attribution MIP (DAMIP)
  - Decadal Climate Prediction Project (DCPP)
- Other CESM2 simulations
  - F-case Control (2000+ years)
  - FAMIP-TOGA ensemble (10 members, 1880-2016)
  - Pacemaker Tropical Pacific ensemble (10 members, 1880-2016)

All simulations will be run with the 1 degree FV atmosphere/land model.

# 2017 CESM Tutorial



August 14<sup>th</sup>-18<sup>th</sup>, 2017, Boulder, CO

- Lectures focused on simulating the climate system
- Practical sessions focused on running CESM2, modifying components and analyzing data
- 2<sup>nd</sup> and 3<sup>rd</sup> year graduate students targeted
- Application deadline: Friday March 2nd





# Useful Websites

- CVCWG Website <http://www2.cesm.ucar.edu/working-groups/cvcwg>
- CVCWG published simulations <https://www2.cesm.ucar.edu/working-groups/cvcwg/cvcwg-simulations-finished-and-published>
- Climate Variability Diagnostics Package (CVDP) <http://www2.cesm.ucar.edu/working-groups/cvcwg/cvdp>
- Large Ensemble <http://www.cesm.ucar.edu/experiments/cesm1.1/LE/>
- Last Millennium Ensemble <https://www2.cesm.ucar.edu/models/experiments/LME>