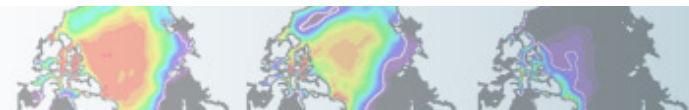


CAM/WACCM/CHEM Discussion

Co-Chairs



CESM2: Atmosphere Configurations

- CAM6: L32, 29 species (simplified chemistry)
 - 1°: F2000, FHIST, F1850, B1850, BHIST
 - Simpler Models (Aquaplanet, Idealized, Test Cases, SCAM)
 - Specified Dynamics (FSDHIST)
 - SE Dynamical Core: ne120, Variable Mesh (CONUS, Tropics)
 - 'Low Resolution' (2° FV)
- WACCM/CHEM: L70, 228 Species (TSMLT)
 - 1° FW2000, FWHIST, BW1850,
 - Specified Dynamics: FWSDHIST
 - Specified Chemistry: FWSCHIST, FWSC2000, BWSCHIST
 - WACCM-X (2°, WACCM4 physics, 126L, 750km lid)
- CHEM (can run with either WACCM or CAM)
 - TSMLT: 228 Species
 - TSMLT: 'SOA' Mechanism

Available but not full science support

WACCM

- Higher Vertical resolution (110L), MA chemistry (88 species), D-region Ion chem (MAD), 2°

CAM

- UNICON, SPCAM, ZM Convective Microphysics, MAM7, Prescribed Aerosol

CHEM

- Mechanism with extended SOA, different complexity, Specified Dynamics

What else is desired for CESM2?